

RPT Parameterisation Tool

Manual



11206279

en

Manual

www.resol.com

Notes



Note

Notes are indicated with an information symbol.

→ Arrows indicate instruction steps that should be carried out.

RPT Parameterisation Tool

Software for remote parameterisation of RESOL controllers. The computer in use must be connected to the controller via an interface adapter, datalogger or communication module in a common network.

System requirements:

Connection:

- RESOL VBus®/LAN or VBus®/USB interface adapter (cable connection to the controller)
- RESOL Communication module or Datalogger (connection to the controller via Internet)
- Windows 7, in compatibility mode Windows 8.1/10, Java 32 bit version 1.6 or higher

Installing and starting the software

- Start the installation by double-clicking on **Setup-RPTX.Y.exe**.
The numbers in the file name correspond to the version number of the software.
- Select the desired language.



- Follow the instructions of the Installation Assistant until the installation is completed.
- Download the desired controller version from the RESOL website and save it on the computer.
- Start the software.



- Confirm **Import device** with OK.
- Select and confirm the downloaded file.

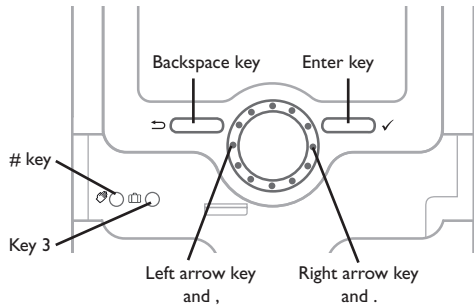
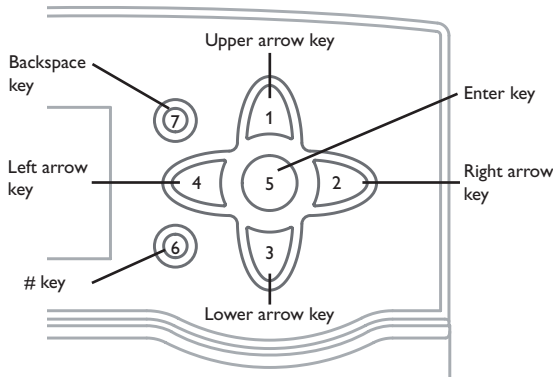
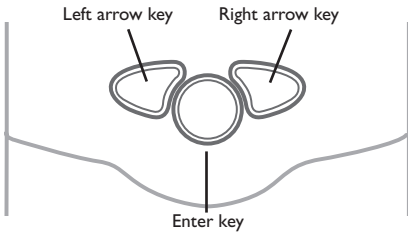
The software starts with the selected controller version.



Note

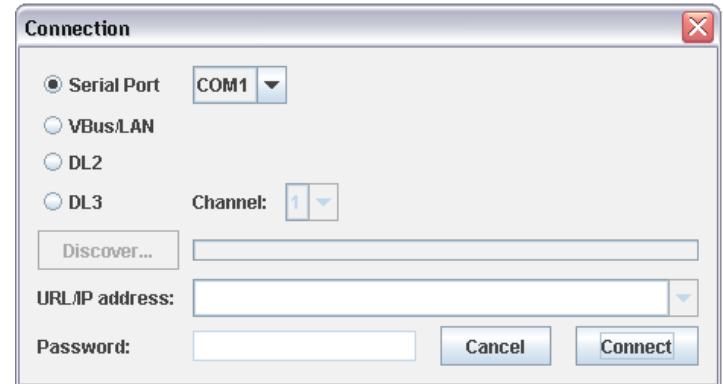
In order to change the controller type later on, close the software and restart it.

A picture of the front of the controller selected will appear. The software can be operated either, like the actual controller, by clicking on the buttons, or by using the keypad. The keys are assigned, depending on the controller type, as follows:



Connection to the controller

- ➔ Select the **Communication** menu.
- ➔ Click on **Connect...**
- ➔ Select the desired interface.



If a VBus®/USB interface adapter is used, select **Serial Port** and adjust the COM port. When in doubt, look up the COM port in the control panel.

If a VBus®/LAN interface adapter, a Datalogger or Communication module is used, select the right URL/IP address by clicking on **Discover**.

If a DL3 is used, the channel must be adjusted as well. The channel number corresponds to the number of the desired VBus® input at the DL3 (VBus1 = channel 1, VBus2 = channel 2, etc.).

Access via VBus.net

With a VBus.net account you can easily use RPT in order to parameterise the controller:

- In the VBus.net menu **My Devices**, click on **Edit**.
- On the **General settings** page, tick the option **Allow parameterization using the via address and the RESOL Parameterization Tool (RPT)**.

General settings

Name

NOTE
Enter a Via tag and save it in order to customize your Via address. When the Via tag has been saved, you can use the via address to access your system over the Internet.
The Via tag must have at least 3 characters, starting with a lower-case letter. It may contain lower-case letters, numbers and hyphens.

Via tag

Timezone

- Enter the Via tag from the VBus.net menu item General settings into the RPT field **URL/IP**.

Connection

Serial Port

VBus/LAN

DL2/KM1

DL3 Channel:

URL/IP address:

Password:

- Enter the password into the **Password** field.

- Click on **Connect**.

At the bottom of the window, enter the password of the interface adapter or datalogger. The factory setting for the password is **vbus**.

- In order to connect the computer to the device, click on the **Connect...** button.

The following window will appear:

Connecting...

Establishing connection ...

Authenticating ...

Waiting for VBus device ...

Checking VBus device selection...

Done!

The coloured spots in front of the connection steps indicate their status. The colours have the following meanings:

Establishing connection...

Yellow: Connection is being established.

Green: Connection has been established successfully.

Red: Connection could not be established.

Possible causes are: wrong IP address, wrong COM port, Port occupied.

Authenticating...

Green: Authentication successful.

Red: Authentication failed.

Waiting for VBus device...

Yellow: VBus® connection is being established.

Green: VBus® connection has been established successfully.

Red: No controller could be detected at the VBus® interface.

Checking VBus device selection...

Green: The selected controller was found at the VBus® when the software was started.

Red: The controller found does not match the controller selected.

Done!

Green: RPT can now be used.

When the connection has been established successfully, the LED in the upper right corner of the controller picture turns green.

Now, values can be read out and settings can be transferred onto the controller.

Reading out values

In the **Communication** menu, select the menu item **Read from device**.

Transferring settings to the controller

In the **Communication** menu, select the menu item **Write to device**.



Note

During data transfer, do not push any buttons on the controller!

Settings made in the software can also be saved as a .set file and loaded later on in order to transfer them to the controller.

Setting the time

In order to transfer the time of the computer system to the controller, select the item **Set current time** in the **Communication** menu.

Storing and loading settings

Settings can also be saved as a .set file in order to be loaded later on.

In order to save settings, proceed as follows:

- ➔ In the **File** menu, select the item **Save current settings....**
- ➔ Select the desired location.
- ➔ Confirm by clicking on **Save**.



Note

Administrator rights are required for saving the settings in the default folder.

- ➔ If necessary, select a different folder for saving the settings.

In order to load previously saved settings, proceed as follows:

- ➔ In the **File** menu, select the item **Load settings....**
- ➔ Select the desired .set file.
- ➔ Confirm by clicking on **Open**.

Disconnecting from the controller

In order to disconnect the computer from the controller, proceed as follows:

- ➔ In the **Communication** menu, select the item **Disconnect**.

The device is disconnected.

Distributed by:

RESOL–Elektronische Regelungen GmbH

Heiskampstraße 10
45527 Hattingen / Germany

Tel.: +49 (0) 23 24 / 96 48 - 0

Fax: +49 (0) 23 24 / 96 48 - 755

www.resol.com

info@resol.com

Important note

The texts and drawings in this manual are correct to the best of our knowledge. As faults can never be excluded, please note:

Your own calculations and plans, under consideration of the current standards and directions should only be basis for your projects. We do not offer a guarantee for the completeness of the drawings and texts of this manual - they only represent some examples. They can only be used at your own risk. No liability is assumed for incorrect, incomplete or false information and/or the resulting damages.

Note

The design and the specifications can be changed without notice.

The illustrations may differ from the original product.

Imprint

This mounting and operation manual including all parts is copyrighted. Any other use outside the copyright requires the approval of **RESOL–Elektronische Regelungen GmbH**. This especially applies for copies, translations, micro films and the storage into electronic systems.

© **RESOL–Elektronische Regelungen GmbH**