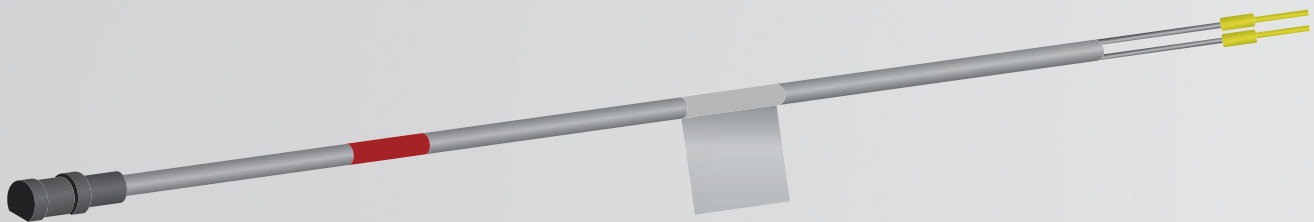
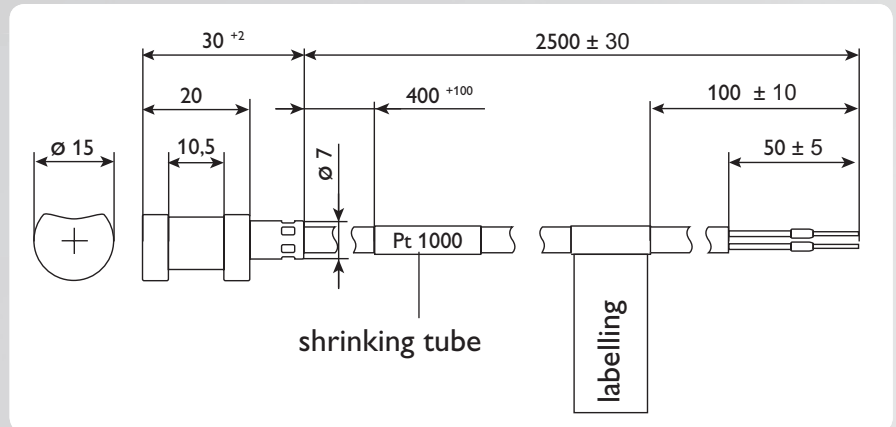
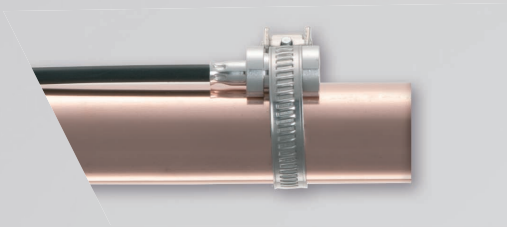


Cylindrical clip-on sensor FKP23

(for surface mounting on tubes) Pt1000 version



	L1 [mm]	L2 [mm]	Material	Application	Temperature range	Article no.
FKP23	30	2500	Silicone cable incl. pipe clip and heat conductive paste	Collector	-50 ... +180 °C	155 009 60

TECHNICAL DATA

Sensor element: Pt1000, DIN EN 60751, class B

Material sleeve / housing: AlMgSiPb

Connection type housing / cable: pressed

Pullout force at approx. +23°C housing / cable: ≥ 30N

Cable: silicon cable Ø 4.85 ± 0.15 mm, black, 2x AWG 24/7, white/red, tinned copper

Pullout force cable / electrical connection: ≥ 30N

Ingress protection: IP 54

Operating temperature: -50 ... +180°C

Electrical connection: end sleeve insulated (8 mm)

Insulation resistance: at min. 100V DC ≥ 100 MΩ