

DeltaTherm® HC MAX

Beginning with firmware version 2.07

RESOL®

Heating controller

Manual for the
specialised craftsman

Installation

Operation

Functions and options

Troubleshooting



11213891



The Internet portal for easy and secure access to
your system data – www.vbus.net

Thank you for buying this RESOL product.

Please read this manual carefully to get the best performance from this unit. Please keep this manual safe.

en

Manual

www.resol.com

Safety advice

Please pay attention to the following safety advice in order to avoid danger and damage to people and property.

Danger of electric shock:

- When carrying out works, the device must first of all be disconnected from the mains.
- It must be possible to disconnect the device from the mains at any time.
- Do not use the device if it is visibly damaged!

The device must not be used by children or persons with reduced physical, sensory or mental abilities or without any experience and knowledge. Make sure that children do not play with the device!

Only connect accessories authorised by the manufacturer to the device.

Make sure that the housing is properly closed before commissioning the device.

Set the code to the customer code before handing over the controller to the customer.

Instructions

Attention must be paid to the valid local standards, regulations and directives!

Target group

These instructions are exclusively addressed to authorised skilled personnel.

Only qualified electricians are allowed to carry out electrical works.

Initial commissioning must be effected by authorised skilled personnel.

Authorised skilled personnel are persons who have theoretical knowledge and experience with the installation, commissioning, operation, maintenance, etc. of electric/electronic devices and hydraulic systems and who have knowledge of relevant standards and directives.

Subject to technical change. Errors excepted.

Information about the product

Proper usage

The controller is designed for use in heating systems in compliance with the technical data specified in this manual.

Any use beyond this is considered improper.

Proper usage also includes compliance with the specifications given in this manual. Improper use excludes all liability claims.



Note:

Strong electromagnetic fields can impair the function of the device.

→ Make sure the device as well as the system are not exposed to strong electromagnetic fields.

EU Declaration of conformity

The product complies with the relevant directives and is therefore labelled with the CE mark. The Declaration of Conformity is available upon request, please contact the manufacturer.



Scope of delivery

The scope of delivery of this product is indicated on the packaging label.

Storage and transport

Store the product at an ambient temperature of 0 ... 40 °C and in dry interior rooms only.

Transport the product in its original packaging only.

Cleaning

Clean the product with a dry cloth. Do not use aggressive cleaning fluids.

Data security

We recommend regular backups of the data stored on the device via SD card.

Decommissioning

1. Disconnect the device from the power supply.
2. Dismount the device.

Disposal

- Dispose of the packaging in an environmentally sound manner.
- At the end of its working life, the product must not be disposed of as urban waste. Old appliances must be disposed of by an authorised body in an environmentally sound manner. Upon request we will take back your old appliances bought from us and guarantee an environmentally sound disposal of the devices.



Description of symbols

Warnings are indicated with a warning symbol!

Signal words describe the danger that may occur, when it is not avoided.

WARNING



means that injury, possibly life-threatening injury, can occur.

→ It is indicated how to avoid the danger described.

ATTENTION



means that damage to the appliance can occur.

→ It is indicated how to avoid the danger described.



Note

Notes are indicated with an information symbol.

→ Texts marked with an arrow indicate one single instruction step to be carried out.

1. Texts marked with numbers indicate several successive instruction steps to be carried out.

The DeltaTherm® HC MAX can control up to 4 weather-compensated heating circuits, the DHW loading and the backup heating demand for both. Additional DHW functions such as circulation or thermal disinfection, and the efficient implementation of further heat sources are possible.

With extension modules, further heating circuits can be controlled. Due to the flexible application and extension possibilities, the heating controller is also ideal for larger properties such as apartment houses, residential homes and industrial buildings.

Contents

1 Overview	5	7.6 Home screen.....	34
2 Installation	6	8 Heating.....	35
2.1 Mounting	6	8.1 Shared relays.....	35
2.2 Electrical connection	8	8.2 Heating circuits	37
2.3 Data communication / Bus.....	10	8.3 Optional functions	45
2.4 SD card slot.....	10	8.4 Screed drying.....	50
3 Step-by-step parameterisation	10	9 Arrangement	51
4 Operation and function	11	9.1 Optional functions	51
4.1 Buttons	11	10 HQM	59
4.2 Selecting menu points and adjusting values	11	11 Basic settings	61
4.3 Adjusting the days of absence	12	12 SD card	61
4.4 Adjusting the timer	13	13 Manual mode	62
4.5 Adjusting optional functions	15	14 User code	63
4.6 Output submenu	17	15 Inputs/Modules.....	63
4.7 Sensor configuration.....	19	15.1 Modules	63
5 Commissioning	20	15.2 Inputs.....	64
5.1 Schemes with basic settings	22	16 Troubleshooting.....	66
6 Main menu	32	17 Index	68
6.1 Menu structure.....	33		
7 Status.....	34		
7.1 Measured / Balance values.....	34		
7.2 Heating.....	34		
7.3 Arrangement	34		
7.4 HQM	34		
7.5 Messages.....	34		

1 Overview

- Up to 5 EM extension modules can be connected via the VBus® (45 sensors and 39 relays in total), up to 7 weather-compensated heating circuits
- Inputs for analogue and digital Grundfos Direct Sensors™ as well as for FRH and FRHd humidity sensors
- Screed drying function
- Data logging, storing, easy transfer of controller adjustments prepared and firmware updates via SD card
- Cooling over the heating circuit with condensation detection
- Dew point calculation by means of the FRH(d) humidity sensor to avoid condensation
- Modulating heating control with 0-10 V boiler control
- Weather-compensated control with room influence or demand-based room control with up to 5 room temperature sensors

Technical data

Inputs: 12 Pt1000, Pt500 or KTY temperature sensor inputs (can optionally be used for remote controls, operating mode switches or potential-free switches), 3 impulse inputs for V40 flowmeters (can optionally be used for Pt1000, Pt500 or KTY temperature sensors, remote controls, operating mode switches or potential-free switches), 1 frequency input, 1 CS10 solar cell, 2 analogue inputs for VFS/RPS Grundfos Direct Sensors™ or FRH humidity sensors, 2 digital inputs for VFD/RPD Grundfos Direct Sensors™ or FRHd humidity sensors

Outputs: 14 relays, 13 of them semiconductor relays for speed control, 1 potential-free relay, 4 PWM outputs (switchable to 0-10 V)

PWM frequency: 512 Hz

PWM voltage: 10.5 V

Switching capacity:

1 (1) A 240 V~ (semiconductor relay)

4 (2) A 24 V== / 240 V~ (potential-free relay)

Total switching capacity: 6.3 A 240 V~

Power supply: 100–240 V~ (50–60 Hz)

Supply connection: type X attachment

Standby: 0.82 W

Temperature controls class: VIII

Energy efficiency contribution: 5%

Mode of operation: type 1.B.C.Y action

Rated impulse voltage: 2.5 kV

Data interface: VBus®, SD card slot

VBus® current supply: 35 mA

Functions: 7 integrated calorimeters and control of weather-compensated heating circuits. Adjustable system parameters and add-on options (menu-driven)

Housing: plastic, PC-ABS and PMMA

Mounting: wall mounting, also suitable for mounting into patch panels

Indication / Display: full graphic display

Operation: 7 buttons

Ingress protection: IP 20/EN 60529

Protection class: I

Ambient temperature: 0 ... 40 °C

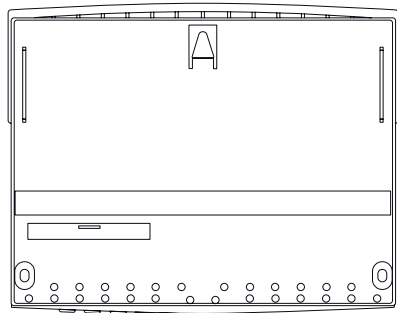
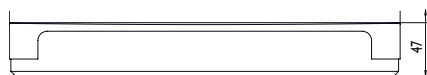
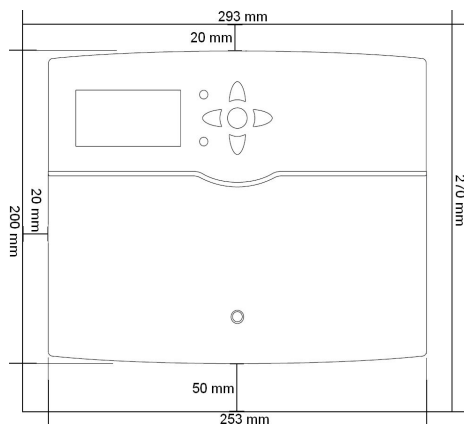
Degree of pollution: 2

Relative humidity: 10... 90 %

Fuse: T6.3A

Maximum altitude: 2000 m above MSL

Dimensions: 253 × 200 × 47 mm



2 Installation

2.1 Mounting

WARNING! Danger of electric shock!



Upon opening the housing, live parts are exposed!

→ **Always disconnect the device from power supply before opening the housing!**



Note

Strong electromagnetic fields can impair the function of the device.

→ Make sure the device as well as the system are not exposed to strong electromagnetic fields.

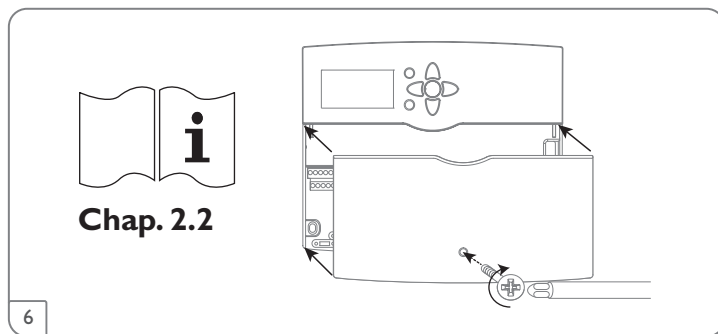
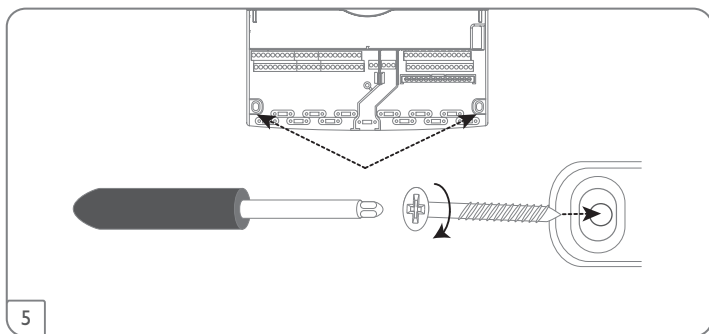
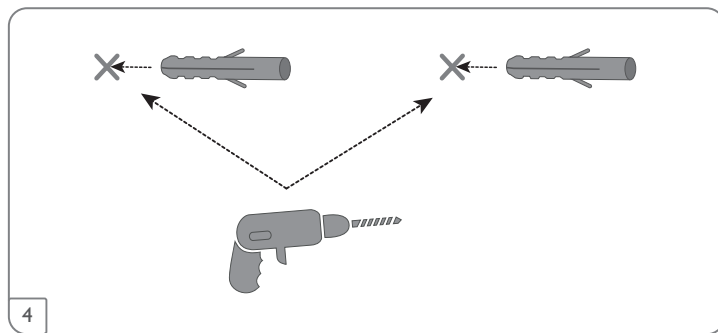
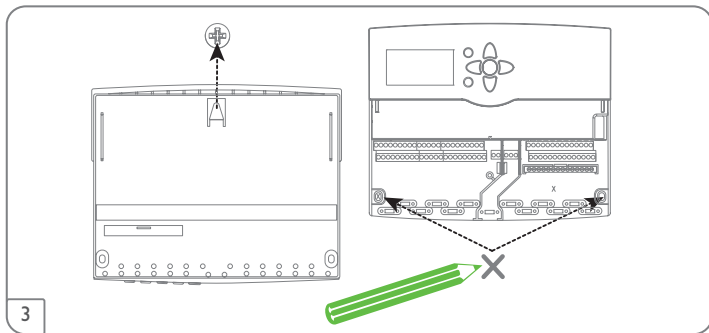
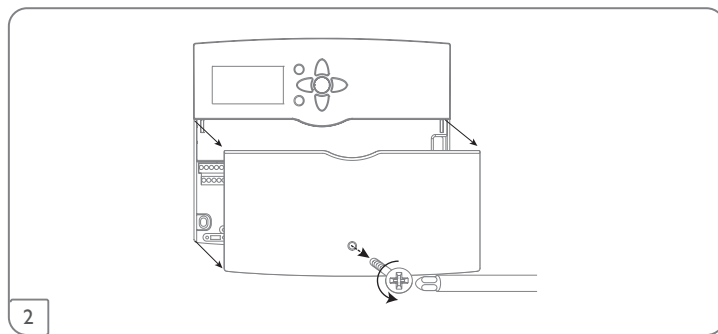
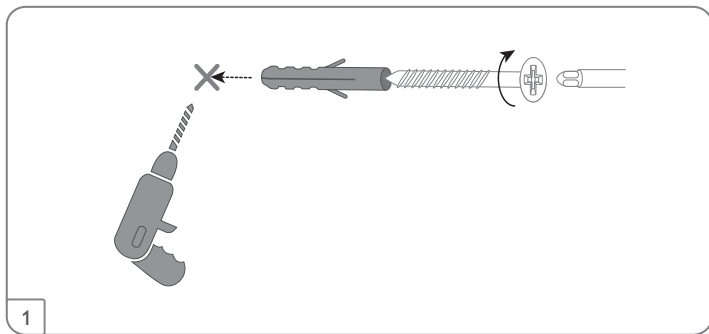
The device must only be located in dry interior rooms.

If the device is not equipped with a mains connection cable and a plug, the device must additionally be supplied from a double pole switch with contact gap of at least 3 mm.

Please pay attention to separate routing of sensor cables and mains cables.

In order to mount the device to the wall, carry out the following steps:

1. Unscrew the crosshead screw from the cover and remove it along with the cover from the housing.
2. Mark the upper fastening point on the wall. Drill and fasten the enclosed wall plug and screw leaving the head protruding.
3. Hang the housing from the upper fastening point and mark the lower fastening points (centres 233 mm).
4. Insert lower wall plugs.
5. Fasten the housing to the wall with the lower fastening screws and tighten.
6. Carry out the electrical wiring in accordance with the terminal allocation (see page 8).
7. Put the cover on the housing.
8. Attach with the crosshead screw.



Chap. 2.2

WARNING! Danger of electric shock!



Upon opening the housing, live parts are exposed!

→ **Always disconnect the device from power supply before opening the housing!**

ATTENTION! ESD damage!



Electrostatic discharge can lead to damage to electronic components!

→ **Take care to discharge properly before touching the inside of the device! To do so, touch a grounded surface such as a radiator or tap!**



Note

Connecting the device to the power supply must always be the last step of the installation!



Note

The **Speed** option must be set to **Off** when non-speed-controlled devices such as valves are connected.



Note

It must be possible to disconnect the device from the mains at any time.

→ Install the mains plug so that it is accessible at any time.

→ If this is not possible, install a switch that can be accessed.

If the mains cable is damaged, it must be replaced by a special connection cable which is available from the manufacturer or its customer service.

Do not use the device if it is visibly damaged!

The controller is equipped with **14 relays** in total to which loads such as pumps, valves, etc. can be connected:

Relays 1 ... 13 are semiconductor relays, designed for pump speed control:

Conductor R1 ... R13

Neutral conductor N (common terminal block)

Protective earth conductor \oplus (common terminal block)

Relay 14 is a potential-free relay:

R14-A = normally open contact

R14-M = centre contact

R14-R = normally closed contact

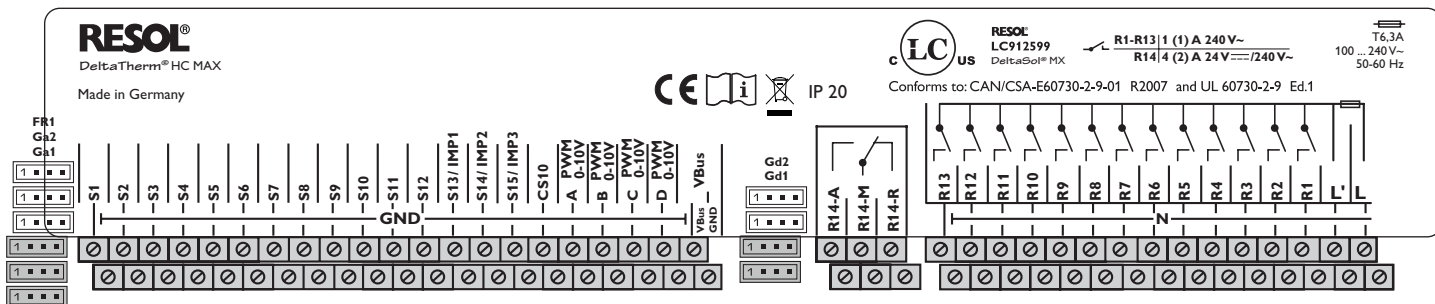
Depending on the product version, mains cables and sensor cables are already connected to the device. If that is not the case, please proceed as follows:

Attach flexible cables to the housing with the enclosed strain relief and the corresponding screws.

The **temperature sensors** (S1 to S12) have to be connected to the terminals S1 to S12 and GND (either polarity).

The cables carry low voltage and must not run together in a cable conduit with cables carrying a voltage higher than 50 V (please pay attention to the valid local regulations). The cable lengths depend on the cross sectional area.

Example: up to 100 m at 1.5 mm², up to 50 m at 0.75 mm². The cables can be extended with a two-wire cable.



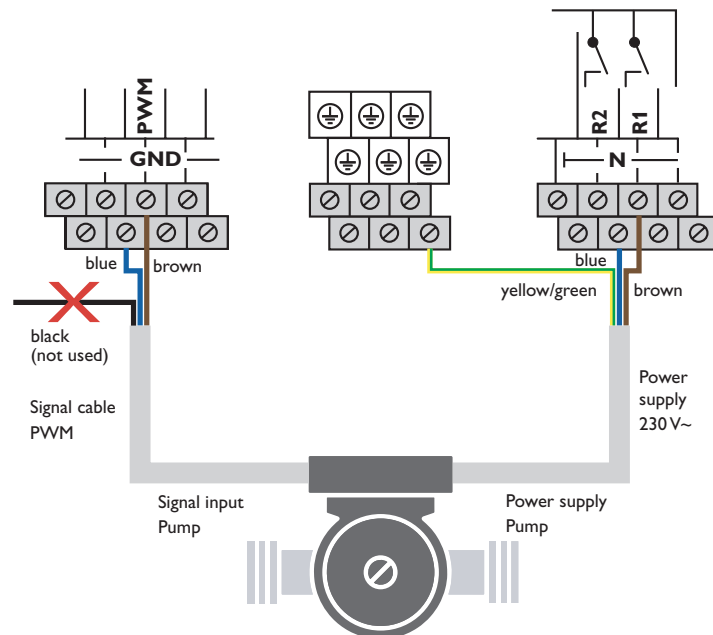
The **V40** flowmeters can be connected to the terminals S13/IMP1 to S15/IMP3 and GND (either polarity).

Connect the irradiation sensor **CS10** to the terminals CS10 and GND with correct polarity. To do so, connect the cable marked GND to the GND common terminal block, the cable marked CS to the terminal marked CS10.

The terminals marked **PWM/0-10V** are control outputs for high-efficiency pumps (for connection see illustration).

Electrical connection of a high-efficiency pump (HE pump)

Speed control of a HE pump is possible via a PWM signal / 0-10V control. The pump has to be connected to the relay (power supply) as well as to one of the PWM outputs of the controller. In the **Output** adjustment channel one of the PWM control types as well as a relay have to be selected (see page 17).



Note

When Grundfos Direct Sensors™ are used, connect the sensor ground common terminal block to PE.

Connect the **analogue Grundfos Direct Sensors™** or **FRH humidity sensors** to the Ga1 and Ga2 inputs.

Connect the **digital Grundfos Direct Sensors™** or **FRHd humidity sensors** to the Gd1 and Gd2 inputs.

Connect the flow rate sensor with frequency signal to the FR1 input.

The controller is supplied with power via a mains cable. The power supply of the device must be 100–240 V~ (50–60 Hz).

Connect the **mains cable** to the following terminals:

Neutral conductor N

Conductor L

Protective earth conductor ⊕ (common terminal block)

WARNING! Danger of electric shock!



L' is a fused contact permanently carrying voltage.

→ **Always disconnect the device from power supply before opening the housing!**

Conductor L' (L' is not connected with the mains cable. L' is a fused contact permanently carrying voltage.)



Note

For more details about the commissioning procedure see page 10.

2.3 Data communication / Bus


The controller is equipped with a VBus® for data transfer and energy supply to external modules. The connection is to be carried out at the terminals marked **VBus** (any polarity).

One or more VBus® modules can be connected via this data bus.

Different solutions for visualisation and remote parameterisation are available on the website www.resol.com. On the website, firmware updates are also available.



Note

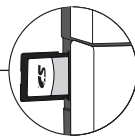
During remote parameterisation, the  symbol will be displayed, the controller will not carry out any control function.

2.4 SD card slot

The controller is equipped with an SD card slot.

With an SD card, the following functions can be carried out:

- Store measurement and balance values onto the SD card. After the transfer to a computer, the values can be opened and visualised, e.g. in a spreadsheet.
- Prepare adjustments and parameterisations on a computer and transfer them via the SD card.
- Store adjustments and parameterisations on the SD card and, if necessary, retrieve them from there.
- Download firmware updates from the Internet and install them on the controller.



Note

For more information about using an SD card, see page 61.

3 Step-by-step parameterisation

The **DeltaTherm® HC MAX** is a controller that offers a broad variety of functions to the user. At the same time, the user has a lot of freedom in configuring them. Therefore, to set up a complex system, careful planning is required. We recommend drawing a sketch of the system first.

If planning, hydraulic construction and electrical connection have all been carried out successfully, proceed as follows:

1. Running the commissioning menu

After the commissioning menu has been finished (see page 20), further adjustments can be made. The commissioning menu can be repeated any time by means of a reset (see page 61). Additional adjustments will be deleted.

For further information about the commissioning menu see page 20.

2. Registering sensors

If flowmeters, flow switches, Grundfos Direct Sensors™, flow rate sensors, humidity sensors, room control units, remote controls, switches and/or external extension modules are connected, these have to be registered in the **Inputs/Modules** menu. For further information about the registration of modules and sensors see page 63.

In some functions, the **Sensor config.** channel is available for sensor selection, in which sensors not used and not registered can be selected. The selected sensor input will automatically be set to the sensor type required for the function.

3. Activating optional functions and/or heating circuits

Now, optional functions and/or heating circuits can be selected, activated and adjusted. Outputs available can be allocated to functions which require an output. The controller always suggests the numerically smallest output available.

Sensors can be allocated to more than one function.

For further information about heating circuits and optional heating functions see page 37.

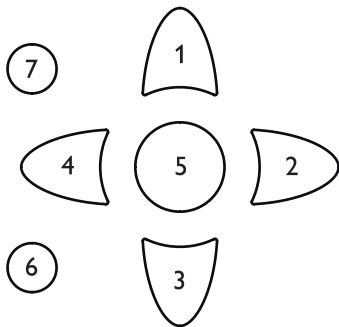
For further information about the optional arrangement functions see page 51.

4 Operation and function

4.1 Buttons

The controller is operated via the 7 buttons next to the display. They have the following functions:

- Button ① - scrolling upwards
- Button ③ - scrolling downwards
- Button ② - increasing adjustment values
- Button ④ - reducing adjustment values
- Button ⑤ - confirming
- Button ⑥ - entering the status menu /chimney sweeper mode (system-dependent)
- Button ⑦ - escape button for changing into the previous menu /to the holidays menu (press and hold down for 5 s, see page 12)



Operating control LED (in the directional pad)

- Green: Everything OK
- Red: Cancellation screed drying
- Red flashing: Sensor fault/initialisation /chimney sweeper function active
- Green flashing: Manual mode/screed drying active

4.2 Selecting menu points and adjusting values

During normal operation of the controller, the display is in the main menu. If no button is pressed for 1 min, the display illumination switches off. After 4 further minutes, the controller will display the home screen (see page 34).

Press any key to reactivate the display illumination.

- ➔ In order to scroll through a menu or to adjust a value, press either buttons ① and ③ or buttons ② and ④.
- ➔ To open a submenu or to confirm a value, press button ⑤.
- ➔ To enter the status menu, press button ⑥ – unconfirmed adjustments will not be saved.
- ➔ To enter the previous menu, press button ⑦ – unconfirmed adjustments will not be saved.

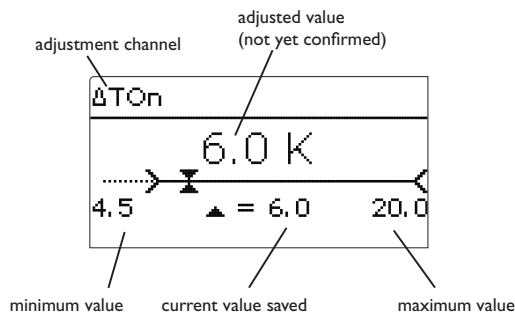
If no button has been pressed within a couple of minutes, the adjustment is cancelled and the previous value is retained.

HC 1	
▶ Op. mode	Auto
Status	Day
Flow	40 °C

If the symbol ▶ is shown behind a menu item, pressing button ⑤ will open a new submenu.

Relay selec.	
▶ <input type="checkbox"/> Controller	
R1	
R2	

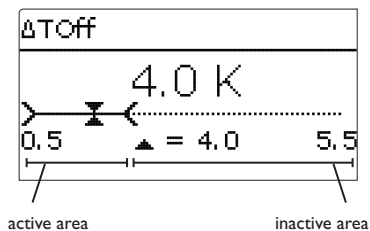
If the symbol ☐ is shown in front of a menu item, pressing button ⑤ will open a new submenu. If it is already opened, a ☒ is shown instead of the ☐.



Values and options can be changed in different ways:

Numeric values can be adjusted by means of a slide bar. The minimum value is indicated to the left, the maximum value to the right. The large number above the slide bar indicates the current adjustment. By pressing buttons ② or ④ the upper slide bar can be moved to the left or to the right.

Only after the adjustment has been confirmed by pressing button ⑤ will the number below the slide bar indicate the new value. The new value will be saved if it is confirmed by pressing button ⑤ again.



When 2 values are locked against each other, they will display a reduced adjustment range depending on the adjustment of the respective other value.

In this case, the active area of the slide bar is shortened, the inactive area is indicated as a dotted line. The indication of the minimum and maximum values will adapt to the reduction.

Type
<input checked="" type="radio"/> Valve
<input type="radio"/> Pump

If only one item of several can be selected, they will be indicated with radio buttons. When one item has been selected, the radio button in front of it is filled.

HC pump 1
<input checked="" type="checkbox"/> Relay
Relay R2
<input type="checkbox"/> PWM/0-10 V

If more than one item of several can be selected, they will be indicated with checkboxes. When an item has been selected, an x appears inside the checkbox.

4.3 Adjusting the days of absence

The parameter **Days of absence** can be used for entering the number of days for an absence.

➔ In order to adjust the days of absence, press and hold down button ⑦ for 5 s. For the number of days adjusted, the following functions are deactivated or modified in their behaviour respectively:

- Heating circuits (see page 43)
- Thermal disinfection (see page 46)
- DHW heating (see page 47)

The remaining days of absence are displayed in the status menu and can be changed there later on.

4.4 Adjusting the timer

When the **Timer** option is activated, a timer is indicated in which time frames for the function can be adjusted.

In the **Day selection** channel, the days of the week are available individually and as frequently selected combinations.

If more than one day or combination is selected, they will be merged into one combination for the following steps.

The last menu item after the list of days is **Continue**. If Continue is selected, the timer menu opens, in which the time frames can be adjusted.

► Day selection
Reset
back

Day selection
☐ Mon-Sun
☐ Mon-Fri
☐ Sat-Sun
☒ Mon
☐ Tue
☒ Wed
☐ Thu
☐ Fri
☐ Sat
☒ Sun
► Continue

3. In order to save the time frame, select **Save** and confirm the security enquiry with **Yes**.

Stop
08:30

Mon,Wed,Sun
Start 06:00
Stop 08:30
► Save

Save
Save? Yes

Mon,Wed,Sun
00 06 12 18
► New time frame
Copy from

Mon,Wed,Sun
00 06 12 18
► New time frame
Copy from

Day selection
► Mon,Wed,Sun
Reset

Adding a time frame:

In order to add a time frame, proceed as follows:

1. Select **New time frame**.

Mon,Wed,Sun
00 06 12 18
► New time frame
Copy from

Mon,Wed,Sun
► Start --:--
Stop --:--
back

Start
06:00

4. In order to add another time frame, repeat the previous steps.

6 time frames can be adjusted per day or combination.

5. Press button ⑦ in order to get back to the day selection.

Copying a time frame:

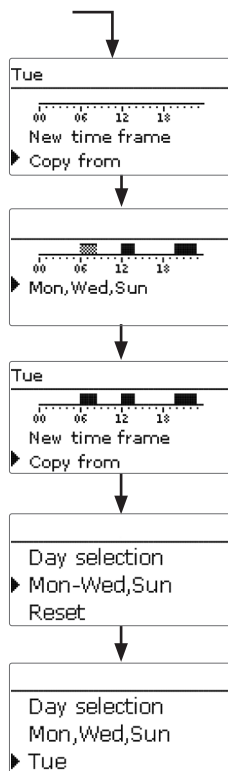
In order to copy time frames already adjusted into another day / another combination, proceed as follows:

1. Choose the day / the combination into which the time frames are to be copied and select **Copy from**.

A selection of days and / or combinations with time frames will appear.

2. Select the day or combination from which the time frames are to be copied.

All time frames adjusted for the selected day or combination will be copied.

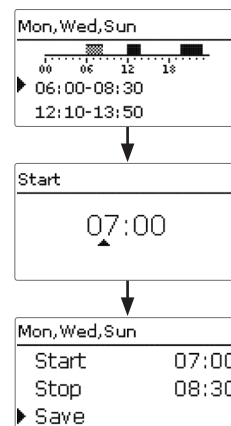


If the time frames copied are not changed, the day or combination will be added to the combination from which the time frames have been copied.

Changing a time frame:

In order to change a time frame, proceed as follows:

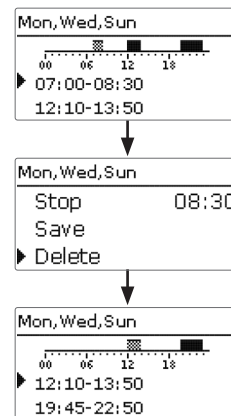
1. Select the time frame to be changed.
2. Make the desired change.
3. In order to save the time frame, select **Save** and confirm the security enquiry with **Yes**.



Removing a time frame:

In order to delete a time frame, proceed as follows:

1. Select the time frame that is to be deleted.
2. Select **Delete** and confirm the security enquiry with **Yes**.



Resetting the timer:

In order to reset time frames adjusted for a certain day or combination, proceed as follows:

1. Select the desired day or combination.

Day selection

► Mon,Wed,Sun
Tue

Mon,Wed,Sun

00 06 12 18

Copy from
► Reset

Reset

Reset? Yes

► Day selection
Tue
Reset

2. Select **Reset** and confirm the security enquiry with **Yes**.

The selected day or combination will disappear from the list, all its time frames will be deleted.

In order to reset the whole timer, proceed as follows:

- ➔ Select **Reset** and confirm the security enquiry with **Yes**.

Mon,Wed,Sun
Tue
► Reset

Reset

Reset? Yes

Day selection
► Reset
back

All adjustments made for the timer are deleted.

4.5 Adjusting optional functions

Add new function

Th. Disinfection
► DHW heating
DHW preheat.

In the **Optional functions / Add new function** menus, optional functions can be selected and adjusted.

The kind and number of optional functions offered depends on the previous adjustments.

DHW heating

► Demand R5
☐ Pump/valve
Mode Therm.

When a function is selected, a submenu opens in which all adjustments required can be made.

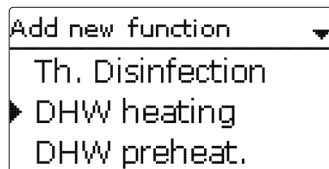
In this submenu, an output and, if necessary, certain system components can be allocated to the function.

If an output can be allocated to the function, the **Output** submenu opens (see page 15).

Load. p. DHW 1

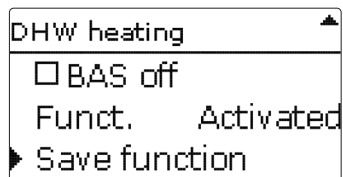
► ☐ Relay
☐ PWM/0-10 V
Manual mode Auto

When a function has been adjusted and saved, it will appear in the **Opt. functions** menu above the menu item **Add new function**.



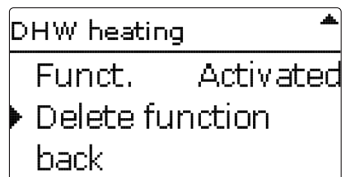
This allows an easy overview of functions already saved.

An overview about which sensor has been allocated to which component and which output has been allocated to which function is given in the **Status** menu.

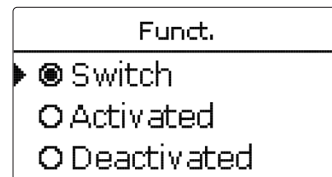


At the end of each optional function submenu, the menu items **Funct.** and **Save function** are available. In order to save a function, select **Save function** and confirm the security enquiry by selecting **Yes**.

In functions already saved, the menu item **Delete function** will appear instead.



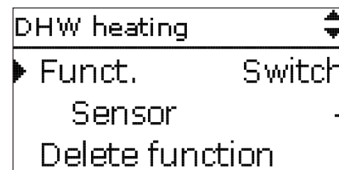
In order to delete a function already saved, select **Delete function** and confirm the security enquiry by selecting **Yes**. The function will become available under **Add new function** again. The corresponding outputs will be available again.



With the menu item **Funct.**, an optional function already saved can be temporarily deactivated or re-activated respectively. In this case, all adjustments will remain stored, the allocated outputs will remain occupied and cannot be allocated to another function. The allocated sensor will be monitored for faults.

By selecting **Switch**, the function can be activated or deactivated respectively by means of an external potential-free switch.

If **Switch** is selected, the channel **Sensor** appears, in which a sensor input can be defined as a switch.



4.6 Output submenu

The **Output** submenu is available in almost all optional functions. Therefore, it will not be explained in the individual function descriptions.

In this submenu, relays and/or signal outputs can be allocated to the function selected. All adjustments required for the outputs can be made in this menu.

All controller and module (if connected) outputs available will be displayed.

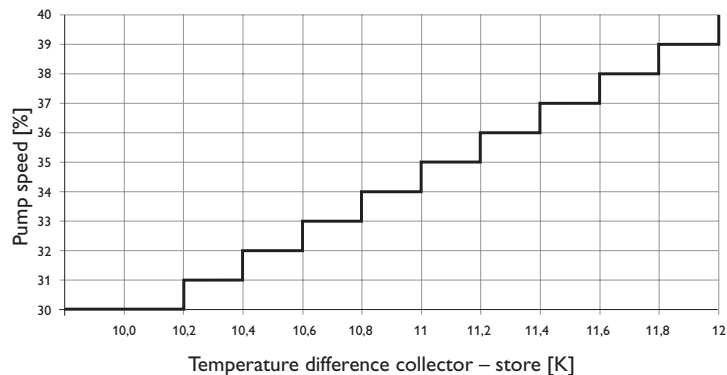
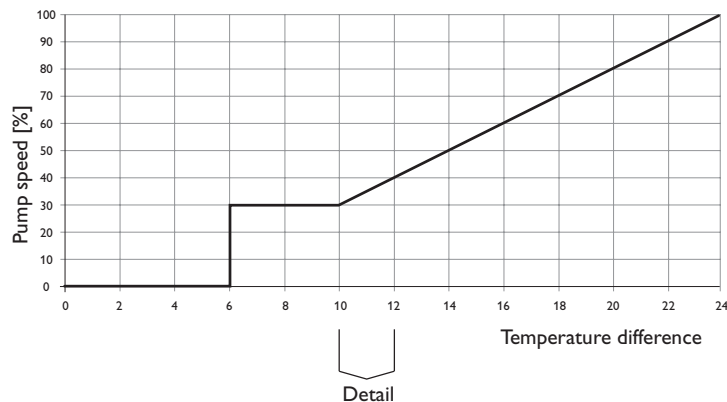
Adjustments

Relay option	PWM/0-10V option	Speed control	Adapter option	Result	Behaviour of the relay output	Behaviour of the signal output	Behaviour of the adapter
Yes	Yes	Yes	Yes	→ On/Off	Modulating	Modulating	
Yes	No	Yes	No	→ Burst control	-	Modulating	
Yes	No	Yes	Yes	→ On/Off	-	Modulating	
Yes	No	No	irrelevant*	→ On/Off	-	0% / 100 %	
Yes	Yes	Yes	No	→ On/Off	Modulating	0% / 100 %	
Yes	Yes	Yes	Yes	→ On/Off	Modulating	Modulating	
Yes	Yes	No	irrelevant*	→ On/Off	0% / 100 %	0% / 100 %	
No	Yes	Yes	irrelevant*	→ -	Modulating	-	
No	Yes	No	irrelevant*	→ -	0% / 100 %	-	

*If the relay option and/or speed control is deactivated, the adjustment in the adapter option will have no effect.

Adjustment channel	Description	Adjustment range/selection	Factory setting
Relay	Relay option	Yes, No	No
Relay	Relay selection	system dependent	system dependent
PWM/0-10V	PWM/0-10V option	Yes, No	No
Output	Signal output selection	system dependent	system dependent
Signal	Signal type	PWM, 0-10 V	PWM
Profile	Curve	Solar, Heating	Solar
Speed	Speed control	Yes, No	system dependent
Min.	Minimum speed	20 ... 100 %	30 %
Max.	Maximum speed	20 ... 100 %	100 %
Adapter	Adapter option	Yes, No	No
Inverted	Inverted switching option	Yes, No	No
Blocking protect.	Blocking protection option	Yes, No	No
Manual mode	Operating mode	Max., Auto, Min., Off	Auto

If - is selected, the function will run normally in the software but will not operate an output. Relay and signal outputs can be activated separately. Depending on the adjustments made, the following results are possible:



Speed control

In the **Speed** adjustment channel, the speed control for the output can be activated or deactivated respectively. If **Yes** is selected, the channels **Min.**, **Max.** and **Adapter** will appear.

In the **Min.** adjustment channel, a relative minimum speed for a pump connected can be allocated to the output.

In the **Max.** adjustment channel, a relative maximum speed for a pump connected can be allocated to the output.

If the speed control signal is generated via a VBus®/PWM interface adapter, the **Adapter** option has to be activated. If **Yes** is selected, the relay will switch on or off (no burst control). Speed information will be transmitted via the VBus®.

For functions controlling loads which are not speed controlled, the speed control will not be shown on the display (e.g. the bypass type, mixer).

If the temperature difference reaches or exceeds the switch-on temperature difference, the pump switches on at 100% speed for 10 s. Then, the speed is reduced to the minimum pump speed value. If the temperature difference exceeds the adjusted set value by 1/10 of the rise value, the pump speed increases by one step (1%). The response of the controller can be adapted via the parameter **Rise**. Each time the difference increases by 1/10 of the adjustable rise value, the pump speed increases by one step until the maximum pump speed of 100% is reached. If the temperature difference decreases by 1/10 of the adjustable rise value, pump speed will be decreased by one step.

Relay option

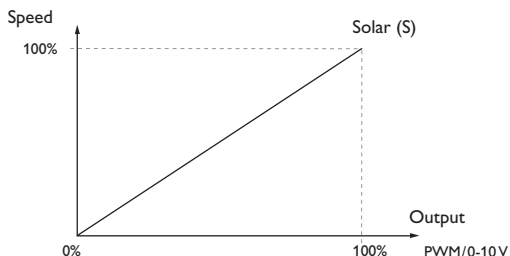
If the **Relay** option is activated, a relay can be allocated to the output selection.

PWM/0-10 V option

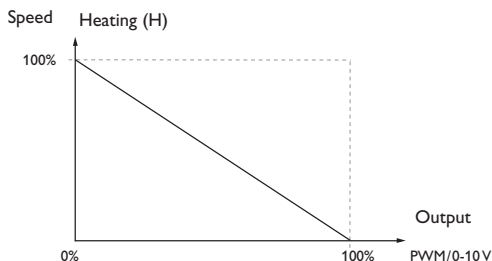
If the **PWM/0-10 V** option is activated, a PWM/0-10 V output can be allocated to the output selection.

In the **Signal** channel, a selection between a PWM or a 0-10V signal can be made. In the **Profile** channel, characteristic curves for solar and heating pumps can be selected.

Signal characteristic: PWM; Profile: Solar



Signal characteristic: PWM; Profile: Heating



Blocking protection

In order to protect the pumps against blocking after standstill, the controller is equipped with a blocking protection option. This option can be activated in the output selection submenu. The **Blocking protection** option can be adjusted in the **Basic settings/Blocking protect.** menu (see page 61).

Manual mode

In the **Manual mode** adjustment channel, the operating mode of the output can be selected. The following options are available:

Off = Output is switched off (manual mode)

Min. = Output is active at minimum speed (manual mode)

Max. = Output is active at 100% (manual mode)

Auto = Output is in automatic mode



Note

After service and maintenance work, the operating mode must be set back to Auto. In manual mode the control logic is overridden.

4.7 Sensor configuration

Some sensors must be registered and configured in the **Inputs/Modules** menu (see page 10 and page 63).

In some functions, the **Sensor config.** channel is available for sensor selection, in which sensors not used and not registered can be selected. The selected sensor input will automatically be set to the sensor type required for the function. Registering the sensor in the **Inputs/Modules** menu is then no longer necessary.



Note

If a sensor is used as the temperature sensor of a function, the sensor types **Switch**, **Fern**, **BAS**, **Impulse** and **none** will not be available for the corresponding input.

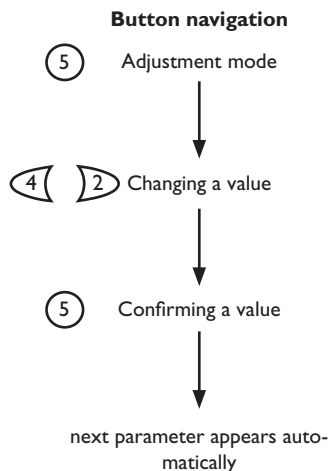
5 Commissioning

When the hydraulic system is filled and ready for operation, connect the controller to the mains.

The controller runs an initialisation phase in which the directional pad glows red. When the controller is commissioned or when it is reset, it will run a commissioning menu after the initialisation phase. The commissioning menu leads the user through the most important adjustment channels needed for operating the system.

Commissioning menu

The commissioning menu consists of the channels described in the following. In order to make an adjustment, press button **5**. Adjust the value by pressing buttons **4** and **2**, then push button **5** to confirm. The next channel will appear in the display.



1. Language:

→ Adjust the desired menu language.

Language
Deutsch
▶ English
Francais

2. Units:

→ Adjust the desired unit system.

Units
<input type="radio"/> °F / gal / MBTU
▶ <input checked="" type="radio"/> °C / Liter / kWh

3. Daylight savings time adjustment:

→ Activate or deactivate the automatic daylight savings time adjustment.

Auto DST
▶ <input checked="" type="radio"/> Yes
<input type="radio"/> No

4. Time:

→ Adjust the clock time. First of all adjust the hours, then the minutes.

Time
12:26

5. Date:

→ Adjust the date. First of all adjust the year, then the month and then the day.

Date
??.??.2016

6. Selection: Scheme

→ Choose whether the controller is to be configured with a scheme number.

Scheme
▶ <input checked="" type="radio"/> Yes
<input type="radio"/> No

7. Scheme (if 6. = Yes):

➔ Enter the scheme number of the desired system.

```

graph TD
    Start(( )) --> Scheme
    subgraph Scheme_Screen [Scheme]
        Input[0000]
    end
    Scheme_Screen --> System
    subgraph System_Screen [System]
        Save[Save?]
        Yes[Yes]
    end
  
```

The diagram shows a flowchart starting with an arrow pointing down to a box labeled "Scheme". Inside the "Scheme" box, there is a display showing "0000" with a small upward-pointing arrow below it. An arrow points down from the "Scheme" box to another box labeled "System". The "System" box contains the text "Save?" and "Yes".

8. Completing the commissioning menu:

After the scheme number has been entered, a security enquiry appears. If the security enquiry is confirmed, the adjustments will be saved.

- ➔ In order to confirm the security enquiry, press button **5**.
- ➔ In order to reenter the commissioning menu channels, press button **7**. If the security enquiry has been confirmed, the controller will be ready for operation.

If the security enquiry has been confirmed, the controller will be ready for operation.



Note

The adjustments carried out during commissioning can be changed anytime in the corresponding adjustment channel. Additional functions and options can also be activated and adjusted (see page 32).

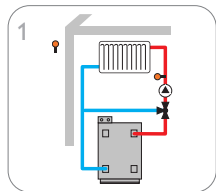
Set the code to the customer code before handing over the controller to the customer (see page 63).

5.1 Schemes with basic settings

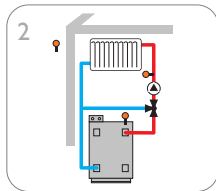
The controller is pre-programmed for 36 schemes. The basic pre-adjustments have already been made. For backup heating it is necessary to allocate the demand and the boiler loading pump by means of shared relays. Afterwards the system can easily be extended.

Relay and sensor allocation correspond to the figures. Scheme 0 has no pre-adjustments.

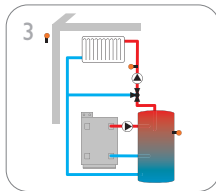
Overview: 9 basic systems with one heating circuit



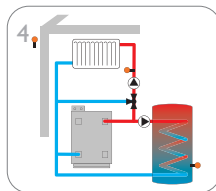
1 mixed heating circuit



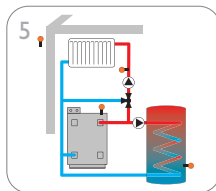
1 mixed heating circuit with backup heating



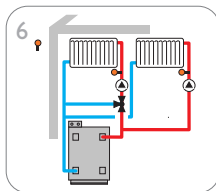
1 mixed heating circuit with backup heating and loading pump



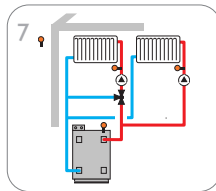
1 mixed heating circuit with DHW heating



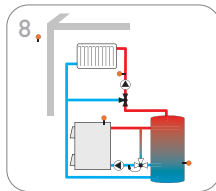
1 mixed heating circuit with DHW heating and backup heating



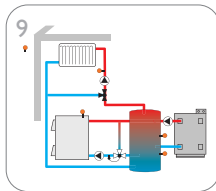
1 mixed and 1 unmixed heating circuit



1 mixed and 1 unmixed heating circuit with backup heating



1 mixed heating circuit with solid fuel boiler



1 mixed heating circuit with solid fuel boiler and backup heating

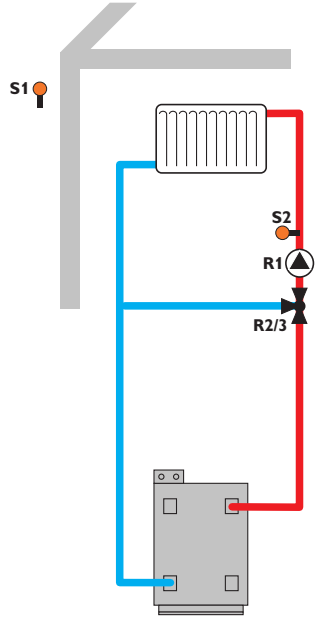
Each basic system has 4 schemes which result from the number of heating circuits. The scheme number consists of 4 digits. The first digit indicates the temperature controls class. The second digit indicates the number of heating circuits, the third and the fourth the desired basic system.

Example:

In order to select system 3 with the settings for 2 heating circuits, enter the scheme number 0203.

0	2	0	3
Temperature controls class	Number of heating circuits	Number of the desired scheme; with a 0 in front of it for numbers with 1 digit	

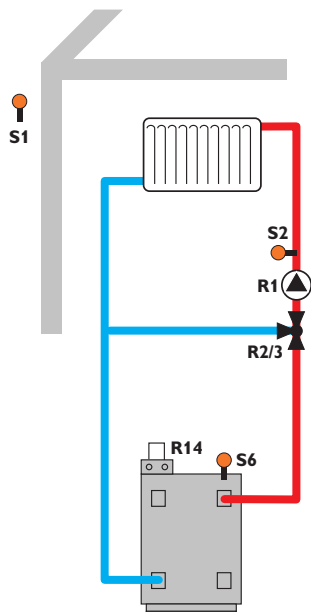
Scheme 1: 1 mixed heating circuit



By means of the flow sensor S2 and the outdoor temperature sensor S1, a mixed weather-compensated heating circuit can be controlled.

Scheme no.	0101	0201	0301	0401
Sensors				
S1	Outdoor	Outdoor	Outdoor	Outdoor
S2	Flow HC1	Flow HC1	Flow HC1	Flow HC1
S3		Flow HC2	Flow HC2	Flow HC2
S4			Flow HC3	Flow HC3
S5				Flow HC4
S6				
S7				
S8				
S9				
S10				
S11				
S12				
Relay				
R1	Pump HC1	Pump HC1	Pump HC1	Pump HC1
R2	Mixer open HC1	Mixer open HC1	Mixer open HC1	Mixer open HC1
R3	Mixer closed HC1	Mixer closed HC1	Mixer closed HC1	Mixer closed HC1
R4		Pump HC2	Pump HC2	Pump HC2
R5		Mixer open HC2	Mixer open HC2	Mixer open HC2
R6		Mixer closed HC2	Mixer closed HC2	Mixer closed HC2
R7			Pump HC3	Pump HC3
R8			Mixer open HC3	Mixer open HC3
R9			Mixer closed HC3	Mixer closed HC3
R10				Pump HC4
R11				Mixer open HC4
R12				Mixer closed HC4
R13				
R14				

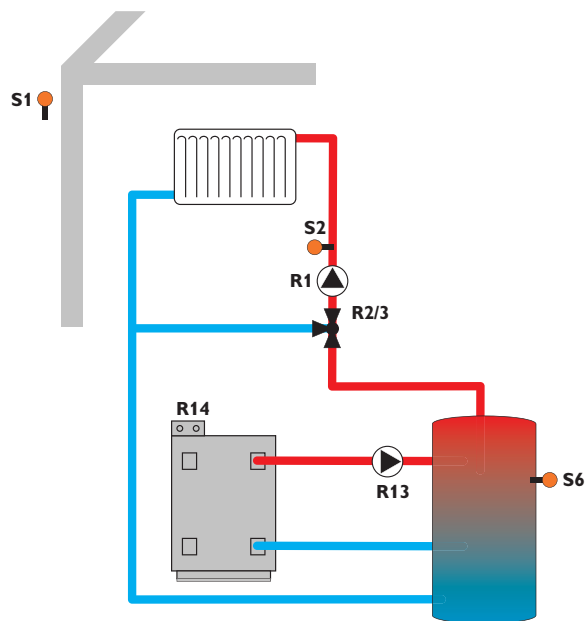
Scheme 2: 1 mixed heating circuit with backup heating (demand)



By means of the flow sensor S2 and the outdoor temperature sensor S1, a mixed weather-compensated heating circuit can be controlled. Boiler demand via the potential-free relay is triggered depending on the temperature difference between the set flow temperature and the value measured at the backup heating sensor S6.

Scheme no.	0102	0202	0302	0402
Sensors				
S1	Outdoor	Outdoor	Outdoor	Outdoor
S2	Flow HC1	Flow HC1	Flow HC1	Flow HC1
S3		Flow HC2	Flow HC2	Flow HC2
S4			Flow HC3	Flow HC3
S5				Flow HC4
S6	BH HC1	BH HC1,2	BH HC1,2,3	BH HC1,2,3,4
S7				
S8				
S9				
S10				
S11				
S12				
Relay				
R1	Pump HC1	Pump HC1	Pump HC1	Pump HC1
R2	Mixer open HC1	Mixer open HC1	Mixer open HC1	Mixer open HC1
R3	Mixer closed HC1	Mixer closed HC1	Mixer closed HC1	Mixer closed HC1
R4		Pump HC2	Pump HC2	Pump HC2
R5		Mixer open HC2	Mixer open HC2	Mixer open HC2
R6		Mixer closed HC2	Mixer closed HC2	Mixer closed HC2
R7			Pump HC3	Pump HC3
R8			Mixer open HC3	Mixer open HC3
R9			Mixer closed HC3	Mixer closed HC3
R10				Pump HC4
R11				Mixer open HC4
R12				Mixer closed HC4
R13				
R14	BH HC1	BH HC1,2	BH HC1,2,3	BH HC1,2,3,4

Scheme 3: 1 mixed heating circuit with backup heating (demand and boiler loading pump)

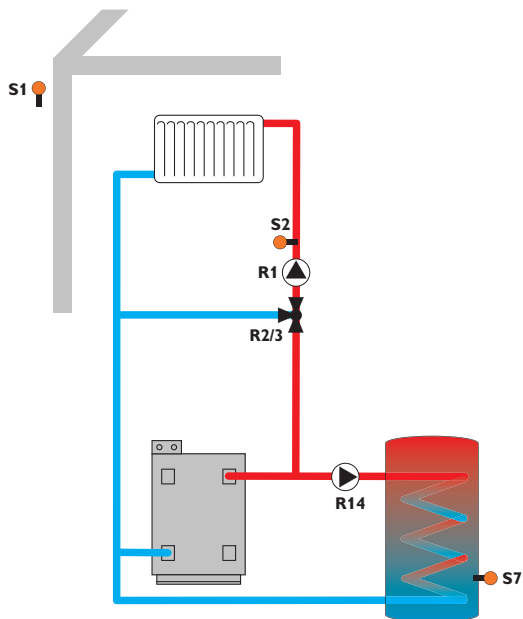


By means of the flow sensor S2 and the outdoor temperature sensor S1, a mixed weather-compensated heating circuit can be controlled.

Boiler demand via the potential-free relay and boiler loading pump control are triggered depending on the temperature difference between the set flow temperature and the value measured at the backup heating sensor S6.

Scheme no.	0103	0203	0303	0403
Sensors				
S1	Outdoor	Outdoor	Outdoor	Outdoor
S2	Flow HC1	Flow HC1	Flow HC1	Flow HC1
S3		Flow HC2	Flow HC2	Flow HC2
S4			Flow HC3	Flow HC3
S5				Flow HC4
S6	BH HC1	BH HC1,2	BH HC1,2,3	BH HC1,2,3,4
S7				
S8				
S9				
S10				
S11				
S12				
Relay				
R1	Pump HC1	Pump HC1	Pump HC1	Pump HC1
R2	Mixer open HC1	Mixer open HC1	Mixer open HC1	Mixer open HC1
R3	Mixer closed HC1	Mixer closed HC1	Mixer closed HC1	Mixer closed HC1
R4		Pump HC2	Pump HC2	Pump HC2
R5		Mixer open HC2	Mixer open HC2	Mixer open HC2
R6		Mixer closed HC2	Mixer closed HC2	Mixer closed HC2
R7			Pump HC3	Pump HC3
R8			Mixer open HC3	Mixer open HC3
R9			Mixer closed HC3	Mixer closed HC3
R10				Pump HC4
R11				Mixer open HC4
R12				Mixer closed HC4
R13	Loading pump BH	Loading pump BH	Loading pump BH	Loading pump BH
R14	BH HC1	BH HC1,2	BH HC1,2,3	BH HC1,2,3,4

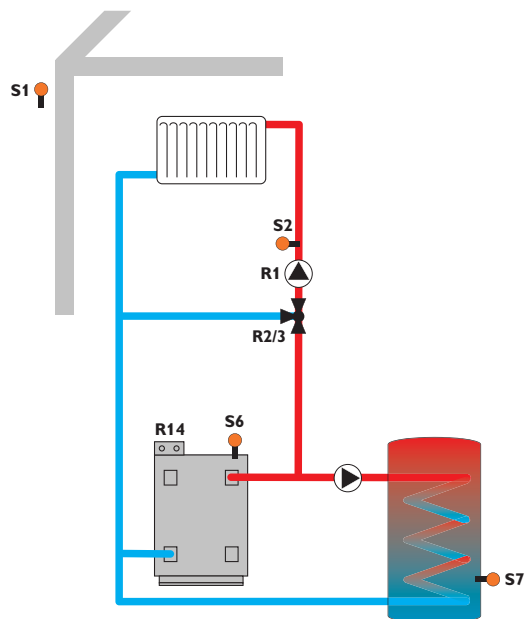
Scheme 4: 1 mixed heating circuit with DHW heating



By means of the flow sensor S2 and the outdoor temperature sensor S1, a mixed weather-compensated heating circuit can be controlled. DHW heating is triggered depending on the value measured at the DHW sensor S7.

Scheme no.	0104	0204	0304	0404
Sensors				
S1	Outdoor	Outdoor	Outdoor	Outdoor
S2	Flow HC1	Flow HC1	Flow HC1	Flow HC1
S3		Flow HC2	Flow HC2	Flow HC2
S4			Flow HC3	Flow HC3
S5				Flow HC4
S6				
S7	DHW heating	DHW heating	DHW heating	DHW heating
S8				
S9				
S10				
S11				
S12				
Relay				
R1	Pump HC1	Pump HC1	Pump HC1	Pump HC1
R2	Mixer open HC1	Mixer open HC1	Mixer open HC1	Mixer open HC1
R3	Mixer closed HC1	Mixer closed HC1	Mixer closed HC1	Mixer closed HC1
R4		Pump HC2	Pump HC2	Pump HC2
R5		Mixer open HC2	Mixer open HC2	Mixer open HC2
R6		Mixer closed HC2	Mixer closed HC2	Mixer closed HC2
R7			Pump HC3	Pump HC3
R8			Mixer open HC3	Mixer open HC3
R9			Mixer closed HC3	Mixer closed HC3
R10				Pump HC4
R11				Mixer open HC4
R12				Mixer closed HC4
R13				
R14	DHW heating	DHW heating	DHW heating	DHW heating

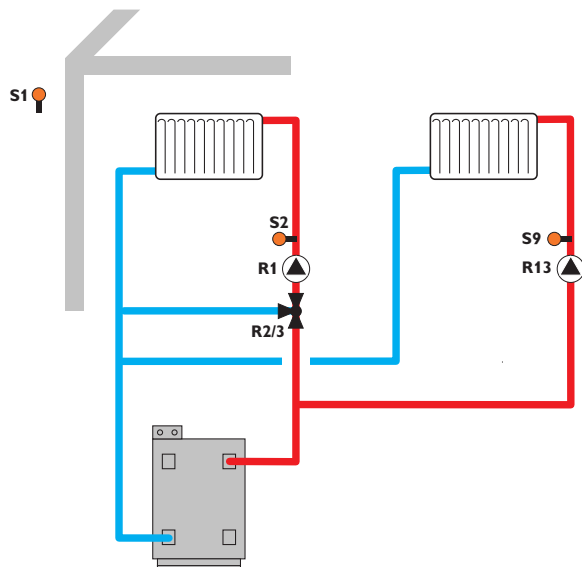
Scheme 5: 1 mixed heating circuit with DHW heating and backup heating (demand for heating circuit and DHW)



By means of the flow sensor S2 and the outdoor temperature sensor S1, a mixed weather-compensated heating circuit can be controlled. DHW heating is triggered depending on the value measured at the DHW sensor S7. Boiler demand via the potential-free relay is triggered depending on the temperature difference between the set flow temperature and the value measured at the backup heating sensor S6. Boiler demand can also be triggered by the temperature difference between the DHW set temperature and the backup heating sensor S6.

Scheme no.	0105	0205	0305	0405
Sensors				
S1	Outdoor	Outdoor	Outdoor	Outdoor
S2	Flow HC1	Flow HC1	Flow HC1	Flow HC1
S3		Flow HC2	Flow HC2	Flow HC2
S4			Flow HC3	Flow HC3
S5				Flow HC4
S6	BH HC1	BH HC1,2	BH HC1,2,3	BH HC1,2,3,4
S7	DHW heating	DHW heating	DHW heating	DHW heating
S8				
S9				
S10				
S11				
S12				
Relay				
R1	Pump HC1	Pump HC1	Pump HC1	Pump HC1
R2	Mixer open HC1	Mixer open HC1	Mixer open HC1	Mixer open HC1
R3	Mixer closed HC1	Mixer closed HC1	Mixer closed HC1	Mixer closed HC1
R4		Pump HC2	Pump HC2	Pump HC2
R5		Mixer open HC2	Mixer open HC2	Mixer open HC2
R6		Mixer closed HC2	Mixer closed HC2	Mixer closed HC2
R7			Pump HC3	Pump HC3
R8			Mixer open HC3	Mixer open HC3
R9			Mixer closed HC3	Mixer closed HC3
R10				Pump HC4
R11				Mixer open HC4
R12				Mixer closed HC4
R13				
R14	DHW heating, BH HC1	DHW heating, BH HC1,2	DHW heating, BH HC1,2,3	DHW heating, BH HC1,2,3,4

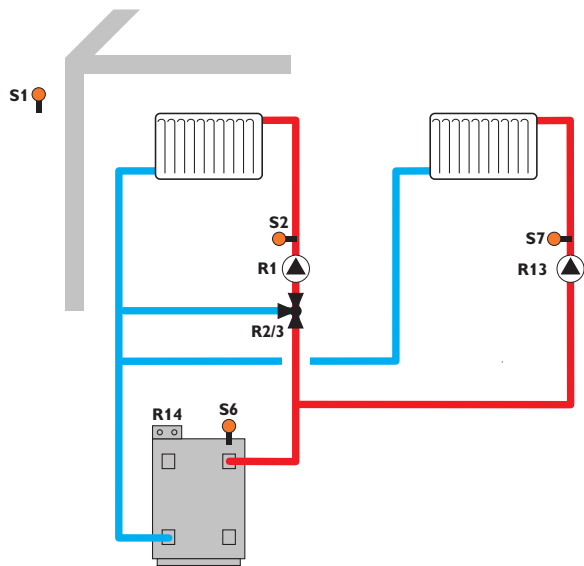
Scheme 6: 1 mixed and 1 unmixed heating circuit



By means of the flow sensors S2 and S9 and the outdoor temperature sensor S1, a mixed and an unmixed weather-compensated heating circuit can be controlled.

Scheme no.	0106	0206	0306	0406
Sensors				
S1	Outdoor	Outdoor	Outdoor	Outdoor
S2	Flow HC1	Flow HC1	Flow HC1	Flow HC1
S3		Flow HC2	Flow HC2	Flow HC2
S4			Flow HC3	Flow HC3
S5				Flow HC4
S6				
S7				
S8				
S9	Flow HC5	Flow HC5	Flow HC5	Flow HC5
S10				
S11				
S12				
Relay				
R1	Pump HC1	Pump HC1	Pump HC1	Pump HC1
R2	Mixer open HC1	Mixer open HC1	Mixer open HC1	Mixer open HC1
R3	Mixer closed HC1	Mixer closed HC1	Mixer closed HC1	Mixer closed HC1
R4		Pump HC2	Pump HC2	Pump HC2
R5		Mixer open HC2	Mixer open HC2	Mixer open HC2
R6		Mixer closed HC2	Mixer closed HC2	Mixer closed HC2
R7			Pump HC3	Pump HC3
R8			Mixer open HC3	Mixer open HC3
R9			Mixer closed HC3	Mixer closed HC3
R10				Pump HC4
R11				Mixer open HC4
R12				Mixer closed HC4
R13	Pump HC5	Pump HC5	Pump HC5	Pump HC5
R14				

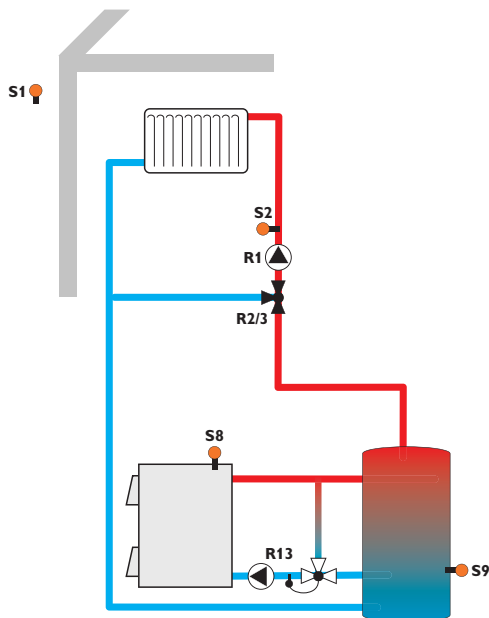
Scheme 7: 1 mixed and 1 unmixed heating circuit with backup heating (demand)



By means of the flow sensors S2 and S7 and the outdoor temperature sensor S1, a mixed and an unmixed weather-compensated heating circuit can be controlled. Boiler demand via the potential-free relay is triggered depending on the temperature difference between the set flow temperatures and the value measured at the backup heating sensor S6.

Scheme no.	0107	0207	0307	0407
Sensors				
S1	Outdoor	Outdoor	Outdoor	Outdoor
S2	Flow HC1	Flow HC1	Flow HC1	Flow HC1
S3		Flow HC2	Flow HC2	Flow HC2
S4			Flow HC3	Flow HC3
S5				Flow HC4
S6	BH HC1,5	BH HC1,2,5	BH HC1,2,3,5	BH HC1,2,3,4,5
S7	Flow HC5	Flow HC5	Flow HC5	Flow HC5
S8				
S9				
S10				
S11				
S12				
Relay				
R1	Pump HC1	Pump HC1	Pump HC1	Pump HC1
R2	Mixer open HC1	Mixer open HC1	Mixer open HC1	Mixer open HC1
R3	Mixer closed HC1	Mixer closed HC1	Mixer closed HC1	Mixer closed HC1
R4		Pump HC2	Pump HC2	Pump HC2
R5		Mixer open HC2	Mixer open HC2	Mixer open HC2
R6		Mixer closed HC2	Mixer closed HC2	Mixer closed HC2
R7			Pump HC3	Pump HC3
R8			Mixer open HC3	Mixer open HC3
R9			Mixer closed HC3	Mixer closed HC3
R10				Pump HC4
R11				Mixer open HC4
R12				Mixer closed HC4
R13	Pump HC5	Pump HC5	Pump HC5	Pump HC5
R14	BH HC1,5	BH HC1,2,5	BH HC1,2,3,5	BH HC1,2,3,4,5

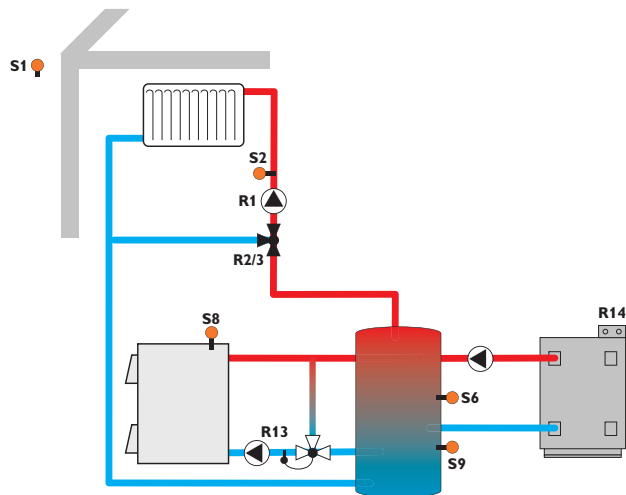
Scheme 8: 1 mixed heating circuit with solid fuel boiler



By means of the flow sensor S2 and the outdoor temperature sensor S1, a mixed weather-compensated heating circuit can be controlled. The solid fuel boiler is controlled depending on the temperature difference between the sensors S8 (solid fuel boiler) and S9 (store).

Scheme no.	0108	0208	0308	0408
Sensors				
S1	Outdoor	Outdoor	Outdoor	Outdoor
S2	Flow HC1	Flow HC1	Flow HC1	Flow HC1
S3		Flow HC2	Flow HC2	Flow HC2
S4			Flow HC3	Flow HC3
S5				Flow HC4
S6				
S7				
S8	Boiler SFB	Boiler SFB	Boiler SFB	Boiler SFB
S9	Store SFB	Store SFB	Store SFB	Store SFB
S10				
S11				
S12				
Relay				
R1	Pump HC1	Pump HC1	Pump HC1	Pump HC1
R2	Mixer open HC1	Mixer open HC1	Mixer open HC1	Mixer open HC1
R3	Mixer closed HC1	Mixer closed HC1	Mixer closed HC1	Mixer closed HC1
R4		Pump HC2	Pump HC2	Pump HC2
R5		Mixer open HC2	Mixer open HC2	Mixer open HC2
R6		Mixer closed HC2	Mixer closed HC2	Mixer closed HC2
R7			Pump HC3	Pump HC3
R8			Mixer open HC3	Mixer open HC3
R9			Mixer closed HC3	Mixer closed HC3
R10				Pump HC4
R11				Mixer open HC4
R12				Mixer closed HC4
R13	Pump SFB	Pump SFB	Pump SFB	Pump SFB
R14				

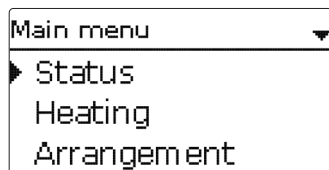
Scheme 9: 1 mixed heating circuit with solid fuel boiler and backup heating (demand)



By means of the flow sensor S2 and the outdoor temperature sensor S1, a mixed weather-compensated heating circuit can be controlled. Boiler demand via the potential-free relay is triggered depending on the temperature difference between the set flow temperature and the value measured at the backup heating sensor S6. The solid fuel boiler is controlled depending on the temperature difference between the sensors S8 (solid fuel boiler) and S9 (store).

Scheme no.	0109	0209	0309	0409
Sensors				
S1	Outdoor	Outdoor	Outdoor	Outdoor
S2	Flow HC1	Flow HC1	Flow HC1	Flow HC1
S3		Flow HC2	Flow HC2	Flow HC2
S4			Flow HC3	Flow HC3
S5				Flow HC4
S6	BH HC1	BH HC1,2	BH HC1,2,3	BH HC1,2,3,4
S7				
S8	Boiler SFB	Boiler SFB	Boiler SFB	Boiler SFB
S9	Store SFB	Store SFB	Store SFB	Store SFB
S10				
S11				
S12				
Relay				
R1	Pump HC1	Pump HC1	Pump HC1	Pump HC1
R2	Mixer open HC1	Mixer open HC1	Mixer open HC1	Mixer open HC1
R3	Mixer closed HC1	Mixer closed HC1	Mixer closed HC1	Mixer closed HC1
R4		Pump HC2	Pump HC2	Pump HC2
R5		Mixer open HC2	Mixer open HC2	Mixer open HC2
R6		Mixer closed HC2	Mixer closed HC2	Mixer closed HC2
R7			Pump HC3	Pump HC3
R8			Mixer open HC3	Mixer open HC3
R9			Mixer closed HC3	Mixer closed HC3
R10				Pump HC4
R11				Mixer open HC4
R12				Mixer closed HC4
R13	Pump SFB	Pump SFB	Pump SFB	Pump SFB
R14	BH HC1	BH HC1,2	BH HC1,2,3	BH HC1,2,3,4

6 Main menu



The following menus are available:

- Status
- Heating
- Arrangement
- HQM
- Basic settings
- SD card
- Manual mode
- User code
- Inputs/Modules

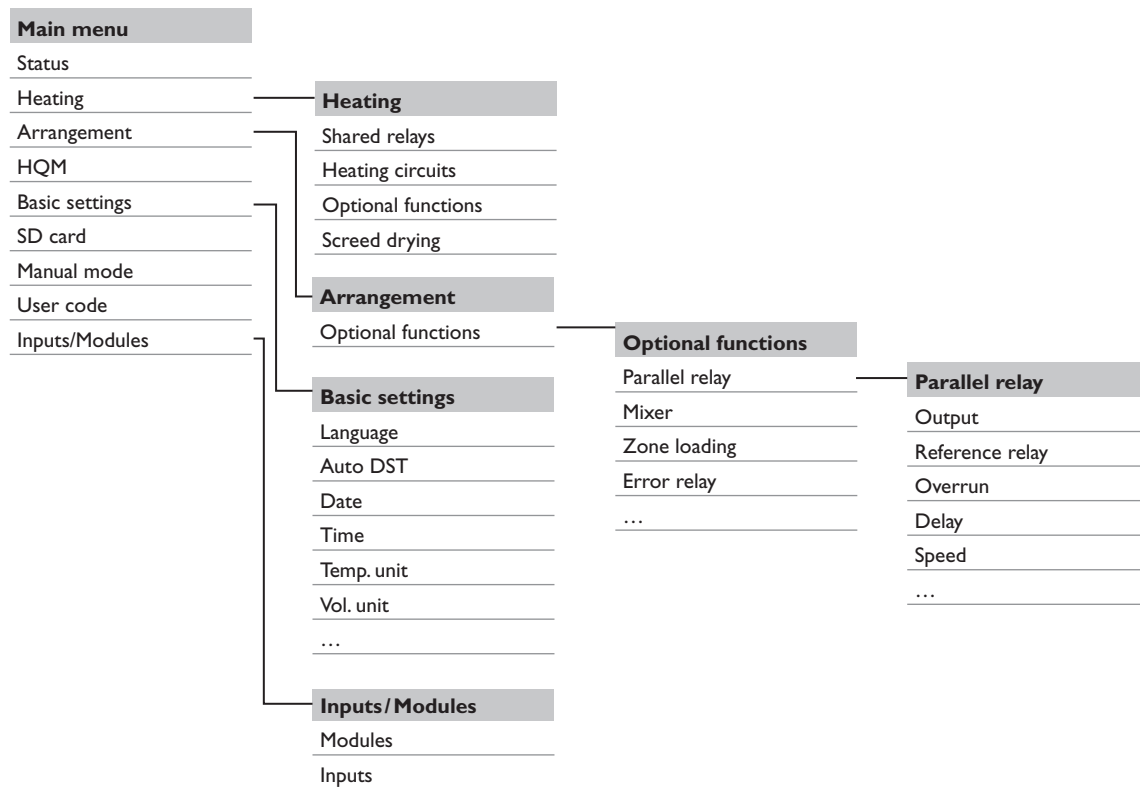
1. Select the menu area by pressing buttons and .
2. Press button in order to enter the menu area selected.



Note

If no button is pressed for 1 min, the display illumination switches off. After 4 further minutes, the controller will display the home screen (see page 34).

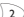
➔ In order to get from the status menu into the main menu, press button !

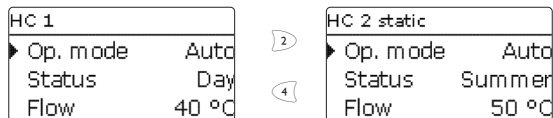
**Note**

The menu items and adjustment values selectable are variable depending on adjustments already made. The figure only shows an exemplary excerpt of the complete menu in order to visualise the menu structure.

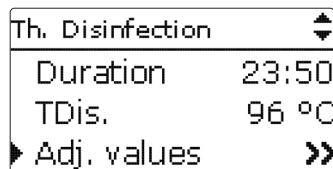
7 Status

In the status menu of the controller, the status messages for every menu area can be found.

Use the buttons  and  for scrolling through the status menu.



At the end of each submenu, the menu item **Adj. values** can be found.






If this one is selected, the corresponding menu opens.

➔ In order to get back to the status menu, press button .

7.1 Measured / Balance values

In the **Status/Meas./Bal. val.** menu, all current measurement values as well as a range of balance values are displayed. Some of the menu items can be selected in order to enter a submenu.

Each sensor and output is indicated with the component or function it has been allocated to. The symbol  at the edge of the display next to a sensor allocated to a function, means that this sensor has several functions. Use buttons  and  to scroll to these functions. The sensors and outputs of the controller and all modules connected are listed in numerical order.

7.2 Heating

In the **Status / Heating** menu, the status of the demands and heating circuits activated as well as of the selected optional functions is indicated.

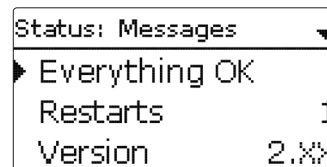
7.3 Arrangement

The **Status/Arrangement** menu shows all status information of all activated optional functions of the arrangement.

7.4 HQM

In the **Status / HQM** menu, all current measured values of the flow and return sensors, flow rate and power as well as heat quantities are indicated. Furthermore, all impulse counter values are indicated.

7.5 Messages


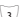
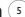


In the **Status / Messages** menu, error and warning messages are indicated.

During normal operation, the message **Everything OK** is indicated.

A message consists of the name of the monitoring function, a 4-digit error code and a short text description of the fault condition.

In order to acknowledge a message, proceed as follows:

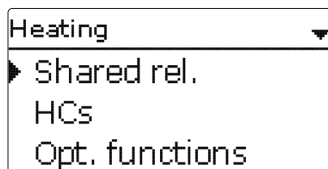
1. Select the code line of the desired message by pressing buttons  and .
2. Acknowledge the message by pressing button .
3. Confirm the security enquiry by selecting **Yes**.

When the installer user code has been entered, the menu item **Restarts** will appear below the messages. The value indicates the number of controller restarts since commissioning. This value cannot be reset.

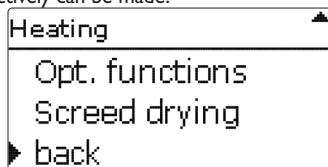
Error code	Display	Monitoring function	Cause
0001	!Sensor fault	Sensor line break	Sensor line broken
0002	!Sensor fault	Sensor short circuit	Sensor line short-circuited
0061	!Data storage def.	Storing and changing adjustments not possible	
0071	!RTC module def.	Time-controlled functions (e.g. night correction) not possible	
0091	Restarts	Restart counter (non-adjustable)	Number of restarts since commissioning

7.6 Home screen

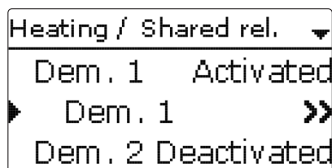
In the **Home screen** menu, the menu which will appear if no button is pressed for a longer period of time can be selected.



In this menu, all adjustments for the heating part of the arrangement or for the heating circuits respectively can be made.



8.1 Shared relays



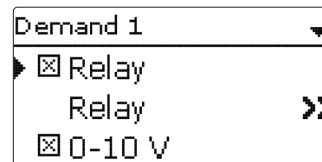
In this menu, adjustments for heat generators which are shared by several heating circuits and their optional functions can be made.

Shared relays will be available for selection under **Virtual** in the heating circuits and in the relay allocation channels of the corresponding optional functions of the heating menu. This way, several heating circuits and optional functions (heating) can demand the same heat source.



Note

Activate and adjust the shared relays first. They will then be available in the heating circuits and optional functions.



Heating / Shared rel.

Adjustment channel	Description	Adjustment range/selection	Factory setting
Dem. 1 (2)	Demand 1 (2)	Activated, Deactivated	Deactivated
Relay	Relay option	Yes, No	No
Relay	Relay submenu	-	-
Relay	Relay selection	system dependent	system dependent
Boiler pr. min	Option for boiler protection min	Yes, No	No
TMin	Minimum boiler temperature	10 ... 90 °C	55 °C
Boiler pr. max	Option for boiler protection max	Yes, No	No
TMax	Maximum boiler temperature	20 ... 95 °C	90 °C
Sen. boiler	Boiler sensor selection	system dependent	S4
0-10 V	0-10 V option	Yes, No	No
0-10 V	0-10 V submenu	-	-
Output	Output selection	-, A, B, C, D	-
TSet 1	Lower boiler temperature	10 ... 85 °C	10 °C
Volt 1	Lower voltage	1.0 ... 10.0 V	1.0 V
TSet 2	Upper boiler temperature	15 ... 90 °C	80 °C
Volt 2	Upper voltage	1.0 ... 10.0 V	8.0 V
Permanent volt.	Permanent voltage option	Yes, No	No
Volt	Permanent voltage value	0.1 ... 9.9 V	2.0 V
TMin	Minimum value set boiler temperature	10 ... 89 °C	10 °C
TMax	Maximum value set boiler temperature	11 ... 90 °C	80 °C
ΔTFlow	Increase for the set flow temperature	0 ... 20 K	5 K
Sen. flow	Flow sensor option	Yes, No	No
Sensor	Flow sensor selection	system dependent	S4
Interval	Monitoring period	10 ... 600 s	30 s
Hysteresis	Correction hysteresis	0.5 ... 20.0 K	1.0 K

Adjustment channel	Description	Adjustment range/selection	Factory setting
Correction	Correction of the voltage signal	0.0 ... 1.0 V	0.1 V
Min. runt.	Minimum runtime option	Yes, No	No
tMin	Minimum runtime	0 ... 120 min	10 min
Manual mode	Operating mode for shared relays	Max., Auto, Off, Min.	Auto
Pump 1 (2)	Shared relay option for loading pump*	Activated, Deactivated	Deactivated
Pump 1 (2)	Pump submenu	-	-
Output	Output selection	system dependent	system dependent
Delay	Pump delay	No, Time, Temp.	No
TOn	Boiler start-up temperature	10 ... 90 °C	60 °C
Duration	Delay to a demand	0 ... 300 s	60 s
Overrun	Pump overrun	No, Time, Temp.	No
TOff	Remaining boiler temperature	10 ... 90 °C	50 °C
Duration	Delay to a demand	0 ... 300 s	60 s
Sen. boiler	Boiler sensor selection	system dependent	system dependent
Manual mode	Manual mode of output	Max., Auto, Min., Off	Auto
Valve 1 (2)	Shared relay option for valve	Activated, Deactivated	Deactivated
Valve 1 (2)	Valve submenu	-	-
Output	Output selection	system dependent	system dependent
Manual mode	Manual mode of output	Max., Auto, Min., Off	Auto

back

*The Shared relay option for loading pump currently has no function.

Every demand can be carried out by means of a relay and/or a 0-10V output. If both the **Relay** and the **0-10 V** option are activated, the demand uses both outputs in parallel.

Example:

The potential-free relay R14 can be allocated to the shared relay **Dem. 1**, for example. R14 will then become available for potential-free boiler demand in the heating circuits and e.g. the DHW heating function.

Relay option

If the **Relay** option is activated, the submenu **Relay** appears, in which a relay can be allocated to the demand.

The **Boiler pr. min** option is used for protecting a boiler against cooling. If the temperature falls below the adjusted minimum temperature, the allocated relay will be energised until the minimum temperature is exceeded by 5 K.

The **Boiler pr. max** option is used for protecting a boiler against overheating. If the adjusted maximum temperature is exceeded, the allocated relay will be switched off until the temperature falls by 5 K below the maximum temperature.

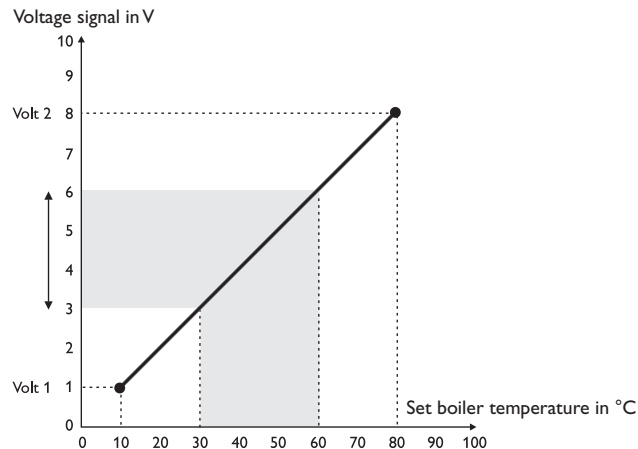
For this purpose, a boiler sensor is required.

0-10 V option

If the **0-10 V** option is activated, the submenu **0-10 V** appears, in which a 0-10 V output can be allocated to the demand.

With this option, the controller can demand modulating heat generators equipped with a 0-10 V interface.

The characteristic curve of the 0-10V signal as a function of the set boiler temperature is defined by means of 2 set points according to the specifications of the boiler manufacturer. At a temperature of **TSet 1**, the voltage signal of the heat generator is **Volt 1**. At a temperature of **TSet 2**, the voltage signal of the heat generator is **Volt 2**. The controller automatically calculates the characteristic curve resulting from these values. If the **permanent voltage** option is activated, the parameter **Volt** appears, by means of which a minimum voltage that is permanently applied to the output can be defined.



By means of the adjustment channels **TMax** and **TMin** the maximum and minimum values for the set boiler temperature can be defined.

When the **Sen. flow** option is activated, the controller monitors whether the heat generator actually reaches the desired set temperature and, if necessary, adjusts the voltage signal accordingly. In order to do so, the controller checks the temperature at the boiler flow sensor when the interval has elapsed. If the temperature measured deviates from the set boiler temperature by more than the hysteresis, the voltage signal is adapted by the **Correction** value. This process will be repeated until the temperature measured is identical to the set boiler temperature.

When the **Min. runt.** option is activated, a minimum runtime can be adjusted for the demand.

Pump

For loading pumps, the shared relays **Pump 1** and **Pump 2** are available. Concerning a demand, the options **Delay** and **Overrun** can be activated for the shared relays. The demand can either be time- or temperature controlled. For temperature-dependent control an allocated boiler sensor is required.

The **Delay** option is used for switching on the loading pump with a delay to a demand. If the adjusted minimum temperature at the allocated sensor is exceeded or the adjusted duration has elapsed, the allocated output switches on. The **Overrun** option is used for switching off the loading pump with a delay to a demand. If the temperature falls below the adjusted remaining boiler temperature or the adjusted duration has elapsed, the allocated output switches off.

Valve

Valves and parallel relays can use the shared relays **Valve 1** and **Valve 2**. These shared relays are energised individually or along with a reference relay (e.g. loading pump).

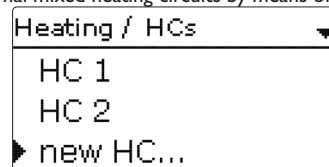


Note

If the 0-10V demand is used for DHW heating, the voltage signal will always be identical to **TMax**.

8.2 Heating circuits

The controller has 4 mixed weather-compensated heating circuits and is able to control up to 3 external mixed heating circuits by means of extension modules.



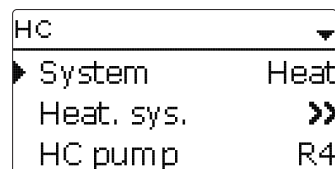
If one or more extension modules are connected, they have to be registered with the controller. Only registered modules will be available in the heating circuit selection.

If **New HC...** is selected for the first time, the first heating circuit is allocated to the controller.

In the heating circuit menu, relays for the heating circuit pump and the heating circuit mixer can be selected.

3 relays are required for a mixed heating circuit.

In the **System** parameter, a selection can be made between **Heat**, **Cool** and **Heat/Cool**.



If the measured flow temperature deviates from the set flow temperature, the mixer will be activated in order to adjust the flow temperature correspondingly.

The mixer runtime can be adjusted with the parameter **Interval**.

Heating system submenu

HC	
▶ Heat. sys.	➤➤
HC pump	R2
Mixer op.	R3

In the **Heating system** submenu, a mode for the heating circuit control can be selected and adjusted. 5 modes are available:

- Constant
- Curve
- Linear
- Room influence
- Room

The calculated set flow temperature is limited by the adjusted values for the maximum flow temperature and the minimum flow temperature.

Maximum flow temperature \geq set flow temperature \geq minimum flow temperature

The remote control allows manual adjustment of the heating curve (± 15 K). Furthermore, the heating circuit can be switched off or a rapid heat-up can be carried out by means of the remote control.

Heating circuit switched off means that the heating circuit pump is switched off and the mixer closed. The flow temperature is boosted to maximum for rapid heat-up when the remote control is set to rapid heat-up.

If the outdoor temperature sensor is defective, an error message will be indicated. For the duration of this condition, the maximum flow temperature -5 K is assumed as the set flow temperature in the **Curve** and **Linear** mode.

By means of the adjustment channels **TFlowmax** and **TFlowmin** the maximum and minimum values for the set flow temperature can be defined.

Heat. sys.	
▶ Mode	Constant
Tflowset	45 °C
Tflowmin	20 °C

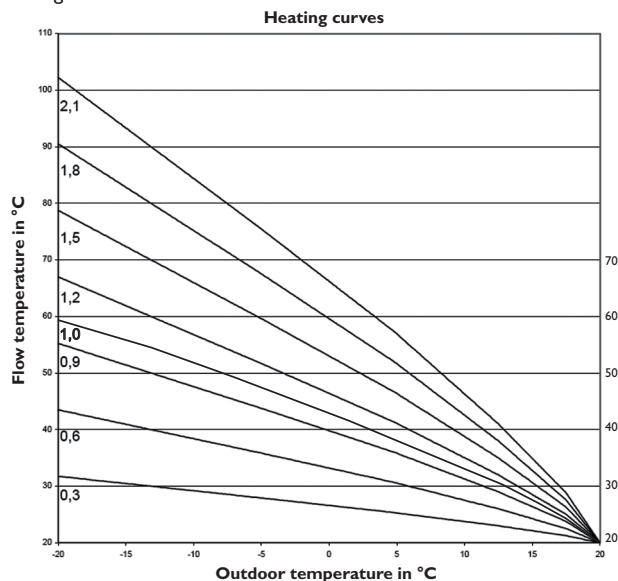
The **Constant** mode aims to keep the set flow temperature at a constant value which can be adjusted by means of the parameter **TFlowset**.

Set flow temperature = TFlowset + remote control + day correction or night correction.

Heat. sys.	
▶ Mode	Curve
Curve	1.0
Tflowmin	20 °C

If the **Curve** mode is selected, the controller calculates a set flow temperature by means of the outdoor temperature and the heating curve selected. In both cases, the dial setting of the remote control and the controller day correction or night correction will be added.

Set flow temperature = heating curve temperature + remote control + day correction or night correction.



Heat. sys. ▾	
► Mode	Linear
TOutdoor 1	20 °C
TFlow 1	20 °C

In the **Linear** mode the flow temperature curve will be calculated depending on the outdoor temperature by 2 points. At a temperature of **TOutdoor 1** the set flow temperature is **TFlow 1**. At a temperature of **TOutdoor 2** the set flow temperature is **TFlow 2**. The controller automatically calculates the characteristic curve resulting from these values.

Heat. sys. ▾	
► Mode	Room infl.
Curve	1.0
Room factor	5

In the **Room influence** mode, the weather-compensated set flow temperature will be expanded by a demand-based room control. The parameter **Room factor** can be used for determining the intensity of the room influence.

The controller will calculate the set flow temperature using the heating system Curve plus the room influence: Set flow temperature = set temperature + remote control + day correction or night correction + room influence.

In order to calculate the deviation of the room temperature from the adjusted set value, at least one sensor-type room thermostat is required. The adjustments can be made in the **Room therm.** submenu.

Heat. sys. ▾	
► Mode	Room
TStart	40 °C
TFlowmin	20 °C

In the **Room** mode, the controller will calculate the set flow temperature by means of the room temperature, the outdoor temperature will not be taken into account. Day/Night correction and Timer will not be indicated.

The start value of the set flow temperature can be influenced by the parameter **TStart**. In order to calculate the deviation of the room temperature from the adjusted set value, at least one sensor-type room thermostat is required (see page 40). The adjustments can be made with the **Room therm. (1 ... 5)** parameter. For this purpose, select **Sensor** in the **Type** adjustment channel.

The adjustments of all activated room thermostats will be taken into account. The controller will calculate the average value of the deviations measured and correct the set flow temperature correspondingly.

Timer

With the **timer**, the day / correction operation can be adjusted. During day phases, the set flow temperature is increased by the adjusted **day correction**.

HC ▾	Timer
► <input checked="" type="checkbox"/> Timer	► Mode Day / Night
Timer >>	Timer >>
<input type="checkbox"/> Summer oper.	back

The parameter **Mode** is used for selecting between the following correction modes:
Day/Night: A reduced set flow temperature (night correction) is used during Night operation.

Day/Off: The heating circuit and the optionally activated backup heating are switched off during night operation.

The **Timer** can be used for adjusting the time frames for day operation.

Summer operation

HC ▾
<input checked="" type="checkbox"/> Summer oper.
► Summer oper. >>
<input type="checkbox"/> Remote access

In summer mode, the heating circuit is switched off.

For summer operation, 2 different modes are available:

Day: If the outdoor temperature exceeds the summer temperature day, the heating circuit switches off.

Day/Night: The parameters **Daytime on** and **Daytime off** can be used for adjusting a time frame for the summer operation. If the outdoor temperature exceeds the summer temperature day within the adjusted time frame, the heating circuit switches off.

Outside the adjusted time frame the summer temperature night is valid.

Summer oper. ▼	
▶ Mode	Day / Night
TDay off	20 °C
TNight off	14 °C

Remote access

With the parameter **Remote access** different types of remote access to the controller can be activated.

HC ▲▼	
<input checked="" type="checkbox"/>	Remote access
▶	Remote access >>
	Room therm. >>



Note

In the sensor selection menu, only outputs which have previously been selected as the input for remote access in the **Inputs/Modules** menu will be available. In the **Sensor config.** channel, sensors not used and not registered can be selected.

Remote access	
▶ Mode	BAS
Sen. BAS	S3
back	

The following types of remote access are possible:

Remote control: A device which allows manual adjustment of the heating curve, thus influencing the set flow temperature.

→ In order to use a remote control, set the **Mode** to **Fern**.

Room control unit: A device incorporating a remote control as well as an additional operating mode switch.

→ In order to use a room control unit, set the **Mode** to **BAS**.

The operating mode switch of the room control unit is used for adjusting the operating mode of the controller. If a room control unit is used, the operating mode can be adjusted by means of the room control unit only. The status menu will only allow the activation of the operating mode **Holiday**.

App: If **App** is selected, remote access as with a remote control or room control unit via an app is possible.

If **Fern** or **BAS** is adjusted, read access is possible with the app.

Mode	
▶	<input checked="" type="radio"/> App
	<input type="radio"/> Fern
	<input type="radio"/> BAS

→ In order to use an app, set the **Mode** to **App**.

If you use an app, the operating mode can be adjusted in the controller menu as well as in the app.

Room thermostat option

Room thermostats ▼	
<input type="checkbox"/>	Room therm. 1
<input type="checkbox"/>	Room therm. 2
▶ <input checked="" type="checkbox"/>	Room therm. 3

Up to 5 room thermostats can be integrated into the control logic.

To each room thermostat, a sensor input can be allocated. If the measured temperature exceeds the adjusted set room temperature at all activated room thermostats and if the parameter **HC off** is activated, the heating circuit switches off.

Common room thermostats with potential-free outputs can be used alternatively. In this case, **Switch** must be selected in the **Type** channel.

Room thermostats ▲▼	
Type	Sensor
▶ Sensor RTH	S4
TAmb.set	18 °C

When the **Timer** option is activated, a timer is indicated in which time frames for the function can be adjusted. Outside these time frames, the adjusted room temperature is decreased by the **Correction** value.
If the heating circuit is in cooling mode, the set room temperature is increased by the **Correction** value.



Note

For information on timer adjustment see page 13.

Room thermostats	
<input type="checkbox"/> Timer	
Correction	5 K
▶ Output	R4

To each room thermostat, an additional output can be allocated. The output switches on when the temperature falls below the adjusted room temperature. This way, the room in question can be excluded from the heating circuit via a valve as long as the desired room temperature is reached.

RTH1 HC 1	
▶ <input checked="" type="checkbox"/> Relay	
Relay	R4
<input type="checkbox"/> PWM/0-10 V	

Backup heating

For the backup heating of the heating circuit, 3 modes are available:

Therm.: In this mode, the set flow temperature is compared to a store reference sensor.

Zone: In this mode, the set flow temperature is compared to 2 store reference sensors. The switching conditions have to be fulfilled at both reference sensors.

On/Off: In this mode, the backup heating is activated when the heating circuit pump is switched on for heating.

Backup heating	
Mode	Zone
▶ Output	Dem.1
Sensor 1	S4

In the **Output** submenu, the modes **Standard** and **Demand** are available. If **Standard** is selected, the output can be adjusted.

BH HC 1	
▶ Mode	Standard
<input type="checkbox"/> Relay	
<input type="checkbox"/> PWM/0-10 V	

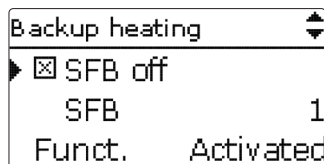
If **Demand** is selected, a demand has to be activated and adjusted in the **Heating / Shared rel.** menu first. If **Adj. values** is selected, the **Heating / Shared rel. / Demand** menu will open.

BH HC 1	
▶ Mode	Demand
Output	Dem.1
Adj. values	➤➤

In the correction mode **Day/Off** (see page 39) the heating circuit and the backup heating is completely switched off during the night operation. The starting optimisation can be used for activating the backup heating before the day operation in order to heat the store to a sufficiently high temperature. The stopping optimisation can be used for deactivating the backup heating before the start of the night operation.

Backup heating	
▶ Loading pump	R4
<input type="checkbox"/> Start. opt.	
<input type="checkbox"/> Stopp. opt.	

If **SFB off** is activated, backup heating is suppressed when a selected solid fuel boiler is active.

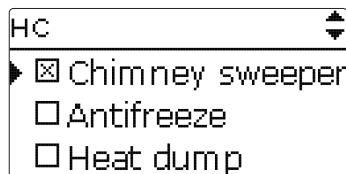


DHW priority

If the parameter **DHW priority** is activated, the heating circuit will be switched off and the backup heating be suppressed as long as DHW heating takes place which has previously been activated in the **Heating / Optional functions** menu.

Chimney sweeper function

The chimney sweeper function can be used for enabling a quick access to measurement conditions without menu operation for the chimney sweeper.



The chimney sweeper function is activated in all heating circuits by default. The chimney sweeper mode can be activated by pressing button ⑥ for 5 s

In the chimney sweeper mode, the heating circuit mixer opens, the heating circuit pump and the backup heating contact are activated. While the chimney sweeper mode is active, the directional pad is flashing red. Additionally, **Chimney sweeper** and a countdown of 30 min are indicated on the display.

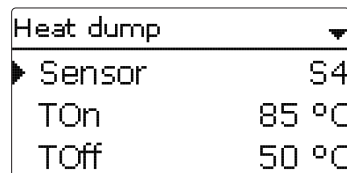
When the countdown has elapsed, the chimney sweeper mode is automatically deactivated. If, during the countdown, button ⑥ is again pressed for more than 5 s, the chimney sweeper mode will stop.

Antifreeze function

The antifreeze function of the heating circuit can be used to temporarily activate an inactive heating circuit during sudden temperature drop in order to protect it against frost damage.

The temperature at the sensor selected will be monitored. If the temperature falls below the adjusted antifreeze temperature, the heating circuit will be activated until the antifreeze temperature is exceeded by 2 K, but at least for 30 min.

Heat dump option



This option is used for diverting excess heat to the heating circuit in order to keep the system temperatures within the operating range. If the temperature at the allocated sensor exceeds the switch-on temperature, the set flow temperature is controlled to reach the adjusted value. If the temperature falls below the adjusted switch-off temperature, the heat dump function switches off.

This option is not available, if a heating circuit mode for cooling or cooling and heating has been selected.

Cooling

In the **Cooling system** submenu, the cooling logic can be adjusted.

For the cooling logic, 2 modes are available:

- Linear
- Constant

Cooling system		Cooling system	
Mode	Constant	Mode	Linear
TFlow	20 °C	TOutdoor 1	20 °C
TFlowmin	10 °C	TFlow 1	20 °C

In the **Linear** mode, the set flow temperature will be calculated as in the heating system mode **Linear**.

The **Constant** mode aims to keep the set flow temperature at a constant value which can be adjusted by means of the parameter **TFlow**.

For activating cooling, 3 modes are available:

- Outdoor
- External switch
- Both

Mode	
<input type="radio"/>	both
<input type="radio"/>	Ext. switch
<input checked="" type="radio"/>	Outdoor

In the **Outdoor** mode, cooling is activated if the outdoor temperature cooling is exceeded.

In the **Ext. switch** mode, cooling is activated by means of an external switch.

In the **both** mode, both switching conditions are valid for cooling.

If the **Timer** option is activated, a time frame can be adjusted in which the cooling will be active.

Dew point

Dew point	
<input type="radio"/>	Humidity
<input type="radio"/>	Switch
<input checked="" type="radio"/>	Off

The **Dew point** option is used for avoiding condensation. For this function, 3 variants are available:

- Humidity
- Switch
- Off

HC	
▶ Dew point	Humidity
Sensor	Ga1
Correction	2 K

When **Humidity** is selected, the controller calculates the dew point by means of the humidity sensor.

The minimum flow temperature results from the dew point plus the adjustable correction value. The **emergency shutdown** option is used for switching off the cooling, if the adjustable relative humidity is exceeded. The re-energise hysteresis for this function can be adjusted. An output can be selected which is activated during an emergency shutdown, e.g. to switch on a fan.

HC	
▶ <input checked="" type="checkbox"/> Emerg. shutd.	
Humidity	95%
Hysteresis	5%

HC	
▶ Dew point	Switch
Sensor	S3
Output	R4

When **Switch** is selected, an input as well as an output can be allocated to a dew point switch. If the dew point switch detects condensation, cooling is interrupted.

If **Off** is selected, the **dew point** option is switched off.

If the **Holiday** option is activated, the heating circuit switches into the correction mode.

➔ In order to adjust the days of absence, press and hold down button 7 for 5 s.

Energy saving operation

Energy saving	
▶ Sen. return	S4
ΔTOff	4 K
Break	15 min

This option is used for optimising the energy consumption of the heating circuit pump. For this purpose an additional sensor in the heating circuit return is required. The controller monitors the temperature difference between the flow and the

return of the heating circuit. If the temperature difference falls below the switch-off difference, the controller deactivates the heating circuit pump for the adjusted break time. After the break time has elapsed, the pump is activated for the runtime. If the temperature difference is higher than the switch-off difference, the pump remains active. If the temperature difference is below the switch-off difference, the break time starts again.

Heating / HCs / new HC... / Internal or Module 1 ... 5

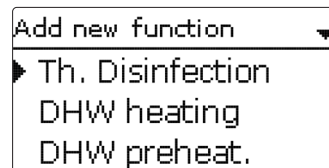
Adjustment channel	Description	Adjustment range/selection	Factory setting
System	Heating circuit mode selection	Heat, Cool, Heat/Cool	Heat
Heat. sys.	Heating system submenu	-	-
Mode	Heating system operating mode	Linear, Constant, Curve, Room, Room infl.	Curve
Curve	Heating curve	0.3 ... 3.0	1.0
Room factor	Room influence factor	1 ... 10	5
TFlowset	Set flow temperature	10 ... 90 °C	45 °C
TOutdoor 1	Lower outdoor temperature	-20 ... +20 °C	+20 °C
TFlow 1	Lower set flow temperature	20 ... 90 °C	20 °C
TOutdoor 2	Upper outdoor temperature	-20 ... +20 °C	-20 °C
TFlow 2	Upper set flow temperature	20 ... 90 °C	70 °C
TStart	Start temperature	20 ... 60 °C	40 °C
TFlowmin	Minimum flow temperature	20 ... 89 °C	20 °C
TFlowmax	Maximum flow temperature	21 ... 90 °C	50 °C
Interval	Mixer interval	1 ... 20 s	4 s
HC pump	Heating circuit pump output selection	system dependent	system dependent
Mixer op.	Output selection mixer open	system dependent	system dependent
Mixer cl.	Output selection mixer closed	system dependent	system dependent
Sen. flow	Flow sensor selection	system dependent	system dependent
Sen. outd.	Outdoor sensor selection	system dependent	system dependent
Day corr.	Correction for day operation	-5 ... +45 K	0 K
Night corr.	Correction for night operation	-20 ... +30 K	-5 K
Timer	Timer function correction mode	Yes, No	No
Mode	Correction mode	Day/Night, Day/Off	Day/Night
Timer	Timer function submenu	-	-
Summer oper.	Summer operation option	Yes, No	No
Summer oper.	Summer operation submenu	-	-
Mode	Summer operating mode	Day/Night, Day	Day
TDay off	Summer temperature day	0 ... 40 °C	20 °C
TNight off	Summer temperature night	0 ... 40 °C	14 °C

Adjustment channel	Description	Adjustment range/selection	Factory setting
Daytime on	Day time frame on	00:00 ... 23:45	09:00
Daytime off	Day time frame off	00:00 ... 23:45	21:00
Remote access	Remote access option	Yes, No	No
Remote access	Remote access submenu	-	-
Mode	Remote access mode	BAS, Fern, App	BAS
Sen. BAS	Allocation operating mode switch input	all inputs type = BAS	-
Sen. RC	Allocation remote control input	all inputs type = Fern	-
Room therm.	Room thermostats submenu	-	-
Room therm. 1 ... 5	Room thermostat option (1 ... 5)	Yes, No	No
Type	Room thermostat type selection	Sensor, Switch	Sensor
Sensor RTH	RTH input allocation	system dependent	system dependent
TAmb.set	Set room temperature	10 ... 30 °C	18 °C
Hysteresis	RTH hysteresis	0.5 ... 20.0 K	0.5 K
Timer	RTH timer function	Yes, No	No
Correction	Correction value	1 ... 20 K	5 K
Output	Output selection	system dependent	system dependent
RTH	Room thermostat	Activated, Deactivated, Switch	Activated
HC off	Heating circuit off option	Yes, No	Yes
Backup heating	Backup heating option	Yes, No	No
Backup heating	Backup heating submenu	-	-
Mode	Backup heating mode selection	Therm., Zone, On/Off	Therm.
Output	Output selection	system dependent	system dependent
Sensor 1	Allocation reference sensor 1	system dependent	system dependent
Sensor 2	Allocation reference sensor 2 (When mode = Zone)	system dependent	system dependent
ΔTOn	Switch-on temperature difference	-15.0 ... 44.5 K	5.0 K
ΔTOff	Switch-off temperature difference	-14.5 ... 45.0 K	15.0 K
Loading pump	Boiler loading pump output selection	system dependent	system dependent
Start. opt.	Starting optimisation option	Yes, No	No
Time	Starting optimisation time	0 ... 300 min	60 min
Stopp. opt.	Stopping optimisation option	Yes, No	No
Time	Stopping optimisation time	0 ... 300 min	60 min
SFB off	Solid fuel boiler off option	Yes, No	No
SFB	Allocation solid fuel boiler	all solid fuel boilers	-

Adjustment channel	Description	Adjustment range/selection	Factory setting
DHW priority	DHW priority option	Yes, No	No
Chimney sweeper	Chimney sweeper option	Yes, No	Yes
Antifreeze	Antifreeze option	Yes, No	No
Sensor	Antifreeze sensor	Flow, Outdoor	Flow
TAntifr.	Antifreeze temperature	-20 ... +10 °C (Outdoor)	+2 °C (Outdoor)
		4 ... 10 °C (Flow)	+5 °C (Flow)
TFlowset	Set flow temperature antifreeze	20 ... 50 °C	20 °C
Heat dump	Heat dump option	Yes, No	No
Heat dump	Heat dump submenu	-	-
Sensor	Allocation heat dump sensor	system dependent	system dependent
TOn	Switch-on temperature heat dump	25 ... 95 °C	85 °C
TOff	Switch-off temperature heat dump	20 ... 90 °C	50 °C
TFlowset	Set flow temperature heat dump	5 ... 90 °C	50 °C
Cooling system	Cooling system submenu	-	-
Mode	Cooling mode	Linear, Constant	Constant
TFlow	Cooling flow temperature	5 ... 25 °C	20 °C
TFlowmin	Minimum flow temperature	5 ... 29 °C	10 °C
TOutdoor 1	Lower outdoor temperature	15 ... 45 °C	20 °C
TFlow 1	Lower set flow temperature	5 ... 25 °C	20 °C
TOutdoor 2	Upper outdoor temperature	15 ... 45 °C	40 °C
TFlow 2	Upper set flow temperature	5 ... 25 °C	10 °C
TFlowmin	Minimum flow temperature	5 ... 29 °C	10 °C
TFlowmax	Maximum flow temperature	6 ... 30 °C	25 °C
Output	Output selection	system dependent	system dependent
Mode	Cooling mode	Outdoor, Ext. switch, both	-
Sensor	Switch input selection	-	-
Inverted	Inverted switching option	Yes, No	No
TDay off	Outdoor temperature cooling	20 ... 40 °C	20 °C
Timer	Timer function cooling	Yes, No	No
tOn	Switch-on time cooling	00:00 ... 23:45	00:00
tOff	Switch-off time cooling	00:00 ... 23:45	00:00
Dew point	Dew point monitoring option	Humidity, Switch, Off	Off
Sensor	Sensor input selection	system dependent	system dependent
Correction	Correction value	0 ... 10 K	2 K
Emerg. shutd.	Emergency shutdown option	Yes, No	No
Humidity	Relative humidity	5 ... 100%	95%

Adjustment channel	Description	Adjustment range/selection	Factory setting
Hysteresis	Re-energise hysteresis	1 ... 10%	5%
Output	Output selection	system dependent	system dependent
Holiday	Heating circuit off when holiday function is active	Yes, No	No
Energy saving	Energy saving operation option	Yes, No	No
Energy saving	Energy saving operation submenu	-	-
Sen. return	HC return sensor allocation	system dependent	system dependent
ΔTOff	Switch-off temperature difference energy saving operation	1 ... 49 K	4 K
Break	Break time energy saving operation	0 ... 60 min	15 min
Runtime	Runtime energy saving operation	0 ... 60 min	2 min
Funct.	De/activation of the heating circuit	Activated, Deactivated, Switch	Activated
Sensor	Switch input selection	-	-

8.3 Optional functions



In this menu, optional functions can be selected and adjusted for the heating part of the arrangement.

The kind and number of optional functions offered depends on the previous adjustments.

In the **Demand** submenu, the modes **Standard** and **Demand** are available. If **Standard** is selected, the output can be adjusted.

If **Demand** is selected, a demand has to be activated and adjusted in the **Heating / Shared rel.** menu first.



Note

For further information about adjusting optional functions, see page 15.



Note

For information on the output selection see page 17.

Thermal disinfection

Th. Disinfection ▼

► Demand R4

☐ Circulating pump

Sensor S4

Heating / Opt. functions / Add new function / Th. Disinfection

Adjustment channel	Description	Adjustment range/selection	Factory setting
Demand	Demand relay selection	system dependent	system dependent
Circulating pump	Circulating pump option	Yes, No	No
Output	Circulating pump output selection	system dependent	system dependent
Sensor	Disinfection sensor selection	system dependent	system dependent
Interval	Monitoring period	0 ... 30, 1 ... 23 (dd:hh)	1d 0h
Temperature	Disinfection temperature	45 ... 90 °C	60 °C
Duration	Disinfection period	0.5 ... 24.0 h	1.0 h
Cancellation	Cancellation option	Yes, No	No
Cancellation	Cancellation interval	1.0 ... 48.0 h	2.0 h
Start. time	Starting delay option	Yes, No	No
Start. time	Starting time	00:00 ... 23:30	20:00
Hyst. off	Switch-off hysteresis	2 ... 20 K	5 K
Hyst. on	Switch-on hysteresis	1 ... 19 K	2 K
TD hold. off	Thermal disinfection off when holiday function is active	Yes, No	No
BAS off	Operating mode switch off option	Yes, No	No
Sensor	Allocation operating mode switch input	system dependent	system dependent
Funct.	Activation / Deactivation	Activated, Deactivated, Switch	Activated
Sensor	Switch input selection	-	-

This function helps to contain the spread of Legionella in DHW stores by systematically activating the backup heating.

One sensor and one output or demand respectively can be selected for this function.

For thermal disinfection, the temperature at the allocated sensor has to be monitored. Protection is ensured when, during the monitoring period, the disinfection temperature is continuously exceeded for the entire disinfection period.

The monitoring period starts as soon as the temperature at the allocated sensor falls below the disinfection temperature. If the monitoring period ends, the demand activates the backup heating. The disinfection period starts when the temperature at the allocated sensor exceeds the disinfection temperature.

Thermal disinfection can only be completed when the disinfection temperature is exceeded for the duration of the disinfection period without any interruption.

The parameter **Cancellation** is used for adjusting the period after which the backup heating is cancelled. If the backup heating is cancelled, an error message is displayed. Thermal disinfection is cancelled.

Starting time delay

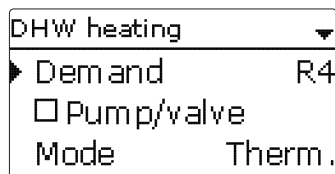
If the starting delay option is activated, a starting time for the thermal disinfection with starting delay can be adjusted. The activation of the backup heating is then delayed until that starting time after the monitoring period has ended.

If the monitoring period ends, for example, at 12:00 o'clock, and the starting time has been set to 18:00, the reference relay will be energised with a delay of 6 hours at 18:00 instead of 12:00 o'clock.

With the **TD hold. off** option, thermal disinfection can be deactivated for a phase of absence.

➔ In order to adjust the days of absence, press and hold down button ⑦ for 5 s.

With the **BAS off** option, DHW heating can be switched from automatic mode to off by means of the operating mode switch.



Heating / Opt. functions / Add new function / DHW heating

Adjustment channel	Description	Adjustment range / selection	Factory setting
Demand	Output selection demand	system dependent	-
Mode	Demand mode	Standard, Demand	Standard
Pump/valve	Loading pump/valve option	Yes, No	No
Output	Output selection loading pump	system dependent	-
Overrun time	Overrun option	Yes, No	No
Duration	Overrun time	1 ... 10 min	1 min
Mode	Operating mode	Zone, Therm.	Therm.
Sensor 1	Allocation reference sensor 1	system dependent	system dependent
Sensor 2	Allocation reference sensor 2 (if mode = Zone)	system dependent	system dependent
TO _{on}	Switch-on temperature	0 ... 94 °C	40 °C
TO _{off}	Switch-off temperature	1 ... 95 °C	45 °C
Timer	Timer function	Yes, No	No
Man. heating	Manual heating option	Yes, No	No
Sensor	Switch input selection	system dependent	system dependent
DHW holid. off	DHW heating off when holiday function is active	Yes, No	No
BAS off	Operating mode switch off option	Yes, No	No
Sensor	Allocation operating mode switch input	system dependent	system dependent
SFB off	Solid fuel boiler off option	Yes, No	No
SFB	Allocation solid fuel boiler	all solid fuel boilers	-
Funct.	Activation / Deactivation	Activated, Deactivated, Switch	Activated
Sensor	Switch input selection	-	-

This function is used for demanding backup heating for heating the DHW store.

If the **Pump/valve** option is activated, another adjustment channel appears, in which an output can be allocated to the pump/valve. The allocated output will switch on and off with the demand relay.

If the **Overrun** time option is activated, the loading pump remains switched on for the adjusted duration after the demand relay has been switched off.

For the DHW heating, 2 modes are available:

Thermal mode

The allocated demand relay switches on when the temperature at the allocated sensor 1 falls below the adjusted switch-on temperature. If the temperature at the allocated sensor 1 exceeds the adjusted switch-off temperature, the relay switches off.

Zone mode

In this mode, a further sensor can be selected. The switch-on, or the switch-off conditions respectively, then have to be fulfilled at both sensors in order for the output to be switched on or off.

When the **Timer** option is activated, a timer is indicated in which time frames for the function can be adjusted.



Note

For information on timer adjustment see page 13.

With the **Man. heating** option, DHW heating can be activated outside the adjusted time frame once by means of a switch, if the temperature has fallen below the switch-off value.

With the **DHW holid. off** option, DHW heating can be deactivated for a phase of absence.

➔ In order to adjust the days of absence, press and hold down button ⑦ for 5 s.

With the **BAS off** option, DHW heating can be switched from automatic mode to off by means of the operating mode switch.

If **SFB off** is activated, DHW heating is suppressed when a selected solid fuel boiler is active.

DHW preheating

DHW preheat.
▼

▶ Pump
R4

□ Valve

Temp. sensor
S4

Heating / Opt. functions / Add new function / DHW preheat.

Adjustment channel	Description	Adjustment range / selection	Factory setting
Pump	Output selection pump	system dependent	-
Valve	Valve option	Yes, No	No
Valve	Output selection valve	system dependent	-
Temp. sensor	Temperature sensor	system dependent	-
Sen. flow rate	Flow rate sensor	IMP1 ... IMP3, Ga1, Ga2, Gd1, Gd2, FR1	-
TMax DHW	DHW maximum temperature	20 ... 90 °C	60 °C
Start. speed	Starting speed DHW preheating	20 ... 100 %	50 %
Increment	Increment speed adaptation	1 ... 100 %	10 %
Hysteresis	Hysteresis speed adaptation	0.5 ... 10.0 K	5.0 K
Delay	Delay time	1 ... 10 s	5 s
ΔT function	Activation ΔT function	Yes, No	No
ΔT_{On}	Switch-on temperature difference	1.0 ... 50.0 K	5.0 K
ΔT_{Off}	Switch-off temperature difference	0.5 ... 49.5 K	3.0 K
Sen. source	Heat source sensor selection	system dependent	-
Sen. sink	Heat sink sensor selection	system dependent	-
Funct.	Activation / Deactivation	Activated, Deactivated, Switch	Activated
Sensor	Switch input selection	-	-

This function uses heat from a buffer store to heat the cold water inlet of the DHW store.

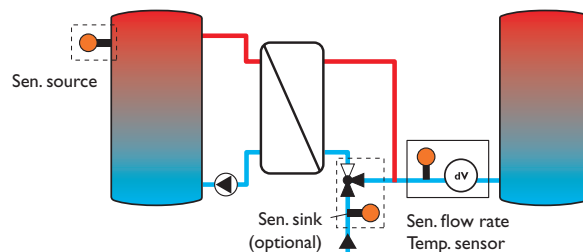
The controller monitors the flow rate at the selected flow rate sensor. If a flow rate is detected, the pump switches on with the starting speed.

If the temperature at the temperature sensor selected exceeds the adjusted DHW maximum temperature, the speed decreases by the **Increment** value. The interval to the next measurement and adaptation can be adjusted by means of the parameter **Delay**.

If the DHW maximum temperature is not reached after the delay time has elapsed, the speed is increased by the increment value. The speed is not increased or decreased respectively within the hysteresis.

If the **ΔT function** is activated, the pump switches on only if ΔT_{On} is exceeded, and switches off if the temperature difference falls below ΔT_{Off} .

If the **Valve** option is activated, the output selected is activated when the pump is activated.



Circulation

Circulation	
► Output	R4
Type	Thermal
Sensor	S4

Heating / Opt. functions / Add new function / Circulation

Adjustment channel	Description	Adjustment range / selection	Factory setting
Output	Output selection	system dependent	system dependent
Type	Variant	Demand, Thermal, Timer, Therm.+Timer, Dem.+Timer	Thermal
Sensor	Circulation sensor selection	system dependent	system dependent
TO n	Switch-on temperature	10 ... 59 °C	40 °C
TOff	Switch-off temperature	11 ... 60 °C	45 °C
Timer	Timer function	Yes, No	No
Delay	Demand switch-on delay	0 ... 3 s	0 s
Runtime	Circulation pump runtime	01:00 ... 15:00 min	03:00 min
Break time	Circulation pump break time	10 ... 60 min	30 min
Funct.	Activation / Deactivation	Activated, Deactivated, Switch	Activated
Sensor	Switch input selection	-	-

The **Circulation** function can be used for controlling a circulation pump.

For the control logic, 5 variants are available:

- Thermal
- Timer
- Thermal + Timer
- Demand
- Demand + Timer

Thermal

The temperature at the allocated sensor is monitored. The allocated output switches on when the temperature falls below the adjusted switch-on temperature. If the temperature exceeds the switch-off temperature, the output switches off.

Timer

The output switches on during the adjusted time frames, outside of them it switches off.

Thermal + Timer

The output operates when the switch-on conditions of both above-mentioned variants are fulfilled.

Demand

The allocated flow switch is monitored for circuit continuity. If circuit continuity is detected at the flow switch, the output switches on for the adjusted runtime. After the runtime has ended, the output switches off. During the adjusted break time, the output remains switched off even if continuity is detected at the flow switch.

Demand + Timer

The output operates when the switch-on conditions of both above-mentioned variants are fulfilled.

When the **Timer**, **Therm.+Timer** or **Dem.+Timer** variant is activated, a timer is indicated in which time frames for the function can be adjusted.



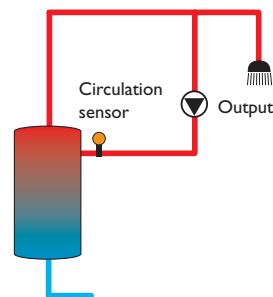
Note

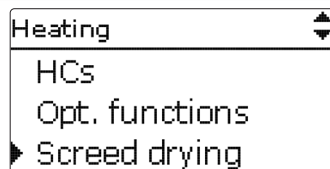
If the flow switch is connected to the input S1 ... S12, continuity must be detected for at least 5 s for the controller to react, 1 s if the flow switch is connected to an impulse input.



Note

For information on timer adjustment see page 13.



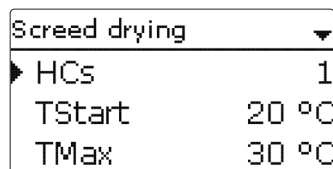


Heating / Screed drying

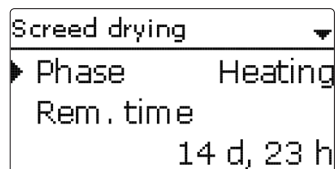
Adjustment channel	Description	Adjustment range/selection	Factory setting
HCs	Heating circuit selection	HC 1...7	system dependent
TStart	Start temperature	10...30 °C	20 °C
TMax	Holding temperature	20...60 °C	30 °C
Rise	Rise value	1...10 K	2 K
Rise time	Rise duration	1...24 h	24 h
tBacking	TMax holding time	1...20 d	5 d
Start	Activation / Deactivation	Yes, No	No

This function is used for time- and temperature-controlled screed drying in selectable heating circuits.

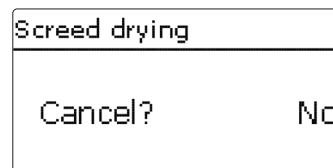
The heating circuits can be selected in the **Heating / Screed drying** menu. At the end of this menu, the function can be triggered by using **Start**.



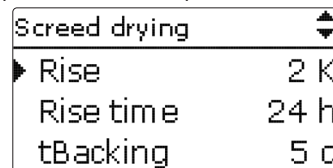
The controller will automatically change to the screed drying status menu. The current **Phase** will be indicated on the display and the **Remaining time** will be indicated as a countdown (dd:hh). During this process, the directional pad flashes green.



At the end of the menu, **Cancel** will be indicated instead of start. If Cancel is selected, screed drying will be cancelled immediately.



At the beginning of the screed drying function, the heating circuits selected are put into operation for the adjusted rise time with the start temperature as the set flow temperature. Afterwards, the set flow temperature increases in steps by the adjustable rise value for the duration of the adjustable rise time until the holding temperature is reached. After the holding time has elapsed, the set flow temperature is reduced in steps until the start temperature is reached again.



If the set flow temperature is not reached within 24 hours or after the rise time respectively, or if it is constantly exceeded, the screed drying function will be cancelled.

The heating circuit switches off and an error message is displayed. The directional pad glows red.

Error 1: flow sensor defective

Error 2: the flow temperature is higher than the maximum flow temperature + 5 K for over 5 min

Error 3: the flow temperature is higher than the holding temperature + rise value for over 30 min

Error 4: the flow temperature is higher than the set flow temperature + rise value for over 2 h

Error 5: the flow temperature is lower than the set flow temperature - rise value for over a rise time period

During screed drying of the heating circuits selected, the other heating circuits run corresponding to their operating modes.

Button ⑦ can be used any time for changing to the status or main menu of the controller in order to carry out adjustments.

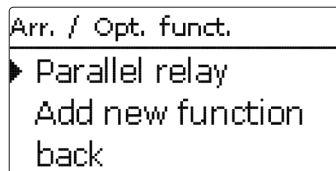
When the screed drying function has been successfully completed, the corresponding heating circuits will change to their operating modes selected.

Screed drying will automatically be deactivated. The chimney sweeper function will be activated in all heating circuits.

Note
Make sure the heating circuits are supplied with heat from a heat source (backup heating).

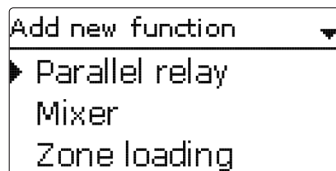
Note
If an SD card has been inserted into the slot, a screed protocol will be generated.

9 Arrangement



In this menu, all adjustments for the arrangement can be made.
Up to 16 optional functions can be selected and adjusted.

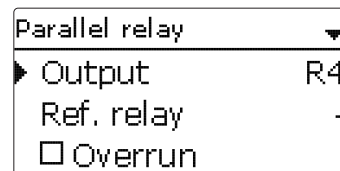
9.1 Optional functions



In this menu, optional functions can be selected and adjusted for the arrangement. The kind and number of optional functions offered depends on the previous adjustments.

Note
For further information about adjusting optional functions, see page 15.

Parallel relay



Arrangement / Opt. functions / Add new function / Parallel relay

Adjustment channel	Description	Adjustment range/selection	Factory setting
Output	Output selection	system dependent	system dependent
Ref. relay	Reference relay selection	system dependent	-
Overrun	Overrun option	Yes, No	No
Duration	Overrun time	1 ... 30 min	1 min
Delay	Delay option	Yes, No	No
Duration	Delay time	1 ... 30 min	1 min
Funct.	Activation / Deactivation	Activated, Deactivated, Switch	Activated
Sensor	Switch input selection	-	-

This function can be used for operating an allocated output alongside a selected reference relay. With this function, e.g. a valve can be controlled in parallel to the pump via a separate output.

If the **Overrun** option is activated, the output remains switched on for the adjusted overrun time after the reference relay has been switched off.

If the **Delay** option is activated, the output is energised after the adjusted duration has elapsed. If the reference relay is switched off again during the delay time, the parallel output is not be switched on at all.

Note
If a relay is in the manual mode, the selected output will not be energised.

Mixer	
Mixer cl.	R3
Mixer op.	R4
Sensor	S4

Arrangement / Opt. functions / Add new function / Mixer

Adjustment channel	Description	Adjustment range / selection	Factory setting
Mixer cl.	Output selection mixer closed	system dependent	system dependent
Mixer op.	Output selection mixer open	system dependent	system dependent
Sensor	Sensor selection	system dependent	system dependent
TMixer	Mixer target temperature	0 ... 130 °C	60 °C
Interval	Mixer interval	1 ... 20 s	4 s
Funct.	Activation / Deactivation	Activated, Deactivated, Switch	Activated
Sensor	Switch input selection	-	-

This function can be used to adjust the actual flow temperature to the desired mixer target temperature. The mixer will be opened or closed in pulses depending on this deviation. The mixer will be controlled with the adjustable Interval. The pause is determined by the difference between the actual value and the set value.

Zone loading	
Output	R3
Sensor top	S3
Sensor base	S4

Arrangement / Opt. functions / Add new function / Zone loading

Adjustment channel	Description	Adjustment range / selection	Factory setting
Output	Output selection	system dependent	system dependent
Sensor top	Top sensor selection	system dependent	system dependent
Sensor base	Base sensor selection	system dependent	system dependent
TOn	Switch-on temperature	0 ... 94 °C	45 °C
TOff	Switch-off temperature	1 ... 95 °C	60 °C
Timer	Timer function	Yes, No	No
Funct.	Activation / Deactivation	Activated, Deactivated, Switch	Activated
Sensor	Switch input selection	-	-

This function can be used for loading a store zone between 2 sensors. For monitoring the switch-on and switch-off conditions, 2 sensors are used. The switch-on and switch-off temperatures are used as reference parameters.

If the measured temperatures at both allocated sensors fall below the adjusted switch-on temperature, the output will be energised. The output will be switched off again if the temperature at both sensors has exceeded the switch-off temperature. If one of the two sensors is defective, zone loading is suppressed or switched off.



Note

For information on timer adjustment see page 13.

Error relay

Error relay	
► Output	R3
Funct.	Activated
Save function	

Arrangement / Opt. functions / Add new function / Error relay

Adjustment channel	Description	Adjustment range/selection	Factory setting
Output	Output selection	system dependent	system dependent
Funct.	Activation / Deactivation	Activated, Deactivated, Switch	Activated
Sensor	Switch input selection	-	-

This function can be used for operating an output in case of an error. Thus, e.g. a signalling device can be connected in order to signal errors.

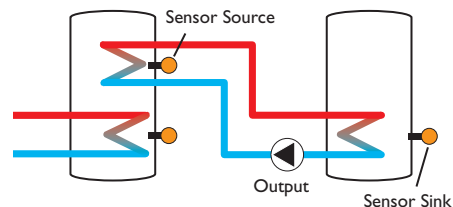
If the error relay function is activated, the allocated output will operate when a fault occurs. If the flow rate monitoring and/or pressure monitoring function is additionally activated, the allocated output will also operate in case of a flow rate or pressure error.

Heat exchange

Heat exchange	
► Output	R3
Sen. source	S3
Sen. sink	S4

Arrangement / Opt. functions / Add new function / Heat exchange

Adjustment channel	Description	Adjustment range/selection	Factory setting
Output	Output selection	system dependent	system dependent
Sen. source	Heat source sensor selection	system dependent	system dependent
Sen. sink	Heat sink sensor selection	system dependent	system dependent
ΔT_{On}	Switch-on temperature difference	1.0 ... 30.0 K	6.0 K
ΔT_{Off}	Switch-off temperature difference	0.5 ... 29.5 K	4.0 K
ΔT_{Set}	Set temperature difference	1.5 ... 40.0 K	10.0 K
TMax	Maximum temperature of the store to be loaded	10 ... 95 °C	60 °C
TMin	Minimum temperature of the store to be discharged	10 ... 95 °C	10 °C
Timer	Timer function	Yes, No	No
Funct.	Activation / Deactivation	Activated, Deactivated, Switch	Activated
Sensor	Switch input selection	-	-



This function can be used for transferring heat from a heat source to a heat sink.

The allocated output is energised when all switch-on conditions are fulfilled:

- the temperature difference between the allocated sensors has exceeded the switch-on temperature difference
- the temperature difference between the allocated sensors has not fallen below the switch-off temperature difference
- the temperature at the heat source sensor has exceeded the minimum temperature
- the temperature at the heat sink sensor is below the maximum temperature
- one of the adjusted time frames is active (if the **Timer** option is selected)

If the temperature difference exceeds the adjusted set value by 1/10 of the rise value, the pump speed increases by one step (1 %).

When the **Timer** option is activated, a timer is indicated in which time frames for the function can be adjusted.



Note

For information on timer adjustment see page 13.

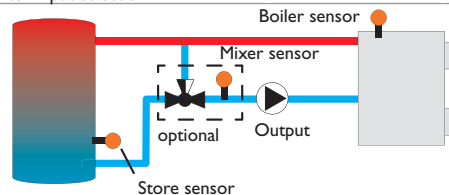
Solid fuel boiler

Solid fuel boiler	
Output	R4
Sen. boiler	S3
Sen. store	S4

Arrangement / Opt. functions / Add new function / Solid fuel boiler

Adjustment channel	Description	Adjustment range / selection	Factory setting
Output	Output selection	system dependent	system dependent
Sen. boiler	Solid fuel boiler sensor selection	system dependent	system dependent
Sen. store	Store sensor selection	system dependent	system dependent
ΔTOn	Switch-on temperature difference	2.0 ... 30.0 K	6.0 K
ΔTOff	Switch-off temperature difference	1.0 ... 29.0 K	4.0 K
ΔTSet	Set temperature difference	3.0 ... 40.0 K	10.0 K
TStoremax	Maximum temperature	4 ... 95 °C	60 °C
TMin boiler	Minimum temperature	4 ... 95 °C	60 °C
Target temp.	Target temperature option	Yes, No	No
Targ. temp.	Target temperature	30 ... 85 °C	65 °C
Sensor	Target temperature reference sensor	system dependent	system dependent
Mixer	Mixer option	Yes, No	No
Mixer cl.	Output selection mixer closed	system dependent	system dependent

Adjustment channel	Description	Adjustment range / selection	Factory setting
Mixer op.	Output selection mixer open	system dependent	system dependent
Sensor	Mixer sensor allocation	system dependent	system dependent
ΔTOpen	Temperature difference mixer open	0.5 ... 30.0 K	5.0 K
ΔTClosed	Temperature difference mixer closed	0.0 ... 29.5 K	2.0 K
Interval	Mixer interval	1 ... 20 s	4 s
Funct.	Activation / Deactivation	Activated, Deactivated, Switch	Activated
Sensor	Switch input selection	-	-



This function can be used for transferring heat from a solid fuel boiler to a store.

The allocated output is energised when all switch-on conditions are fulfilled:

- the temperature difference between the allocated sensors has exceeded the switch-on temperature difference
- the temperature difference between the allocated sensors has not fallen below the switch-off temperature difference
- the temperature at the solid fuel boiler sensor has exceeded the minimum temperature
- the temperature at the store sensor is below the maximum temperature

When the set temperature difference is exceeded, pump speed control starts. For every deviation by 1/10 of the adjusted rise value, the pump speed will be adjusted by 1%.

If the **Target temp.** option is activated, the pump speed control logic will change.

The controller will remain at the minimum pump speed until the temperature at the allocated sensor exceeds the adjusted target temperature.

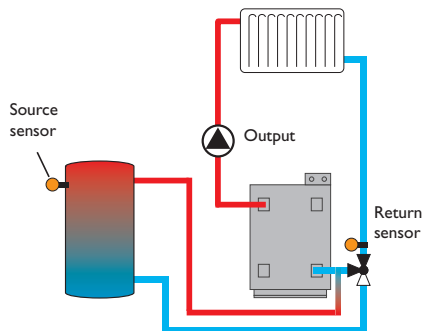
The **Mixer** option can be used to keep the boiler return temperature above **TMin boiler**. The mixer will be controlled with the adjustable interval.

Return preheating

Ret. preheat.	
► Output	R4
Sen. return	S4
Sen. source	S3

Arrangement / Opt. functions / Add new function / Ret. preheat.

Adjustment channel	Description	Adjustment range / selection	Factory setting
Output	Output selection	system dependent	system dependent
Sen. return	Return sensor selection	system dependent	system dependent
Sen. source	Heat source sensor selection	system dependent	system dependent
ΔT_{On}	Switch-on temperature difference	2.0 ... 30.0 K	6.0 K
ΔT_{Off}	Switch-off temperature difference	1.0 ... 29.0 K	4.0 K
Summer off	Summer switch-off option	Yes, No	No
Sensor	Outdoor sensor selection	system dependent	system dependent
TOff	Switch-off temperature	10 ... 60 °C	20 °C
Funct.	Activation / Deactivation	Activated, Deactivated, Switch	Activated
Sensor	Switch input selection	-	-



This function can be used for transferring heat from a heat source to the heating circuit return.

The allocated output is energised when all switch-on conditions are fulfilled:

- the temperature difference between the allocated sensors has exceeded the switch-on temperature difference
- the temperature difference between the allocated sensors has not fallen below the switch-off temperature difference
- if **Summer off** is activated, the temperature at the outdoor temperature sensor falls below the adjusted outdoor temperature value

With the summer switch-off option, the return preheating can be suppressed outside the heating period.

Function block

Function block	
► Output	R4
<input type="checkbox"/> Thermostat a	
<input type="checkbox"/> Thermostat b	

Arrangement / Opt. functions / Add new function / Function block

Adjustment channel	Description	Adjustment range / selection	Factory setting
Output	Output selection	system dependent	system dependent
Thermostat a	Thermostat function a	Yes, No	No
Th-a on	Switch-on temperature thermostat a	-40 ... +250 °C	+40 °C
Th-a off	Switch-off temperature thermostat a	-40 ... +250 °C	+45 °C
Sensor	Sensor thermostat a	system dependent	system dependent
Thermostat b	Thermostat function b	Yes, No	No
Th-b on	Switch-on temperature thermostat b	-40 ... +250 °C	+40 °C
Th-b off	Switch-off temperature thermostat b	-40 ... +250 °C	+45 °C
Sensor	Sensor thermostat b	system dependent	system dependent
ΔT function	Differential function	Yes, No	No
ΔT_{On}	Switch-on temperature difference	1.0 ... 50.0 K	5.0 K
ΔT_{Off}	Switch-off temperature difference	0.5 ... 49.5 K	3.0 K
ΔT_{Set}	Set temperature difference	3 ... 100 K	10 K
Sen. source	Heat source sensor	system dependent	system dependent
Sen. sink	Heat sink sensor	system dependent	system dependent
Timer	Timer function	Yes, No	No

Adjustment channel	Description	Adjustment range/selection	Factory setting
Ref. output	Reference output function	Yes, No	No
Mode	Reference output mode	OR, AND, NOR, NAND	OR
Output	Reference output 1	all outputs	-
Output	Reference output 2	all outputs	-
Output	Reference output 3	all outputs	-
Output	Reference output 4	all outputs	-
Output	Reference output 5	all outputs	-
Flow rate	Flow rate function	Yes, No	No
Fl. on	Switch-on flow rate	1.0 ... 999.0 l/min	8.0 l/min
Fl. off	Switch-off flow rate	0.5 ... 998.5 l/min	7.5 l/min
Sen. flow rate	Flow rate sensor	IMP1 ... IMP3, Ga1, Ga2, Gd1, Gd2, FR1	-
Funct.	Activation / Deactivation	Activated, Deactivated, Switch	Activated
Sensor	Switch input selection	-	-

In addition to the pre-defined optional functions, function blocks consisting of thermostat functions, timer, differential, reference output and flow rate functions are available. With the help of these function blocks, further components and functions respectively can be controlled.

To each function block, sensors and outputs available can be allocated.

Within a function block the functions are interconnected (AND gate). This means that the switching conditions of all the activated functions have to be fulfilled for switching the allocated output. As soon as one condition is not fulfilled, the output will switch off.

Thermostat function

The switching condition for the thermostat function is considered fulfilled when the adjusted switch-on temperature (Th-(x) on) is reached.

The switching condition for the thermostat function is considered unfulfilled when the adjusted switch-off temperature (Th-(x) off) is reached.

Allocate the reference sensor in the **Sensor** channel.

Adjust the maximum temperature limitation with (Th-(x) off) > (Th-(x) on) and the minimum temperature limitation with (Th-(x) on) > (Th-(x) off). The temperatures cannot be set to an identical value.

ΔT function

The switching condition for the ΔT function is considered fulfilled when the adjusted switch-on temperature (ΔT_{on}) is reached.

The switching condition for the ΔT function is no longer considered fulfilled when the adjusted switch-off temperature (ΔT_{off}) is reached.

The ΔT function is equipped with a speed control function. A set temperature difference and a minimum speed can be adjusted. The non-adjustable rise value is 2 K.

Reference output

Up to 5 Reference outputs can be selected. Whether the reference outputs are to be switched in series (AND), in parallel (OR), in series + inverted (NAND) or in parallel + inverted (NOR) can be adjusted in the **Mode** channel.

OR mode

If at least one of the reference outputs is switched on, the switching condition for the reference output function is considered fulfilled.

If none of the reference outputs is switched on, the switching condition for the reference output function is considered unfulfilled.

NOR mode

If none of the reference outputs is switched on, the switching condition for the reference output function is considered fulfilled.

If at least one of the reference outputs is switched on, the switching condition for the reference output function is considered unfulfilled.

AND mode

If all reference outputs are switched on, the switching condition for the reference output function is considered fulfilled.

If at least one of the reference outputs is switched off, the switching condition for the reference output function is considered unfulfilled.

NAND mode

If at least one of the reference outputs is switched off, the switching condition for the reference output function is considered fulfilled.

If all reference outputs are switched on, the switching condition for the reference output function is considered unfulfilled.

Flow rate

If the adjusted switch-on flow rate is exceeded, the switching condition for the flow rate function is considered fulfilled.

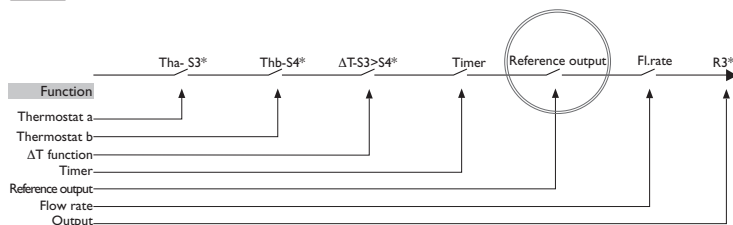
If the flow rate falls below the adjusted switch-off value, the condition for the flow rate function is no longer considered fulfilled.

The flow rate sensor for this function can be selected.



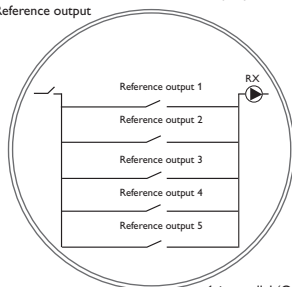
Note

For information on timer adjustment see page 13.



* exemplary selection, sensors and outputs can be freely selected

Reference output



1. in parallel (OR)



2. in series (AND)

Irradiation switch

Irrad. switch
▼

► Output
R3

Irrad.
200 W/m²

Duration
2 min

Arrangement / Opt. functions / Add new function / Irrad. switch

Adjustment channel	Description	Adjustment range/selection	Factory setting
Output	Output selection	system dependent	system dependent
Irrad.	Switch-on irradiation	50 ... 1000 W/m ²	200 W/m ²
Duration	Switch-on duration	0 ... 30 min	2 min
Inverted	Inverted switching option	Yes, No	No
Funct.	Activation / Deactivation	Activated, Deactivated, Switch	Activated
Sensor	Switch input selection	-	-

This function can be used for operating an output depending on the measured irradiation value.

The allocated output will be switched on if the adjusted irradiation value remains exceeded for the adjusted duration. If the irradiation falls below the adjusted irradiation value for the adjusted duration, the output will be switched off.

If the **Inverted** option is activated, the output will operate vice versa.

Return mixing function

Ret. mixing	
Mixer op.	R3
Mixer cl.	R4
Sen. store	S3

Arrangement / Opt. functions / Add new function / Ret. mixing

Adjustment channel	Description	Adjustment range/selection	Factory setting
Mixer op.	Output selection mixer open	system dependent	system dependent
Mixer cl.	Output selection mixer closed	system dependent	system dependent
Sen. store	Store sensor allocation	system dependent	system dependent
Sen. HC ret.	HC return sensor allocation	system dependent	system dependent
Sen. boiler ret.	Boiler return sensor allocation	system dependent	system dependent
ΔT_{On}	Switch-on temperature difference	1.0 ... 25.0 K	5.0 K
ΔT_{Off}	Switch-off temperature difference	0.5 ... 24.0 K	3.0 K
ΔT_{Set}	Set temperature difference	-20 ... +25 K	+7 K
TMax	Maximum boiler return temperature	10 ... 80 °C	60 °C
Interval	Mixer interval	1 ... 20 s	2 s
HC intern.	Detection controller heating circuit active	Yes, No	No
HC intern.	Heating circuit allocation	HC 1...7	-
Runtime	Mixer runtime	10 ... 600 s	105 s
Time	Time of automatic adjustment	00:00 ... 23:45	00:00
Funct.	Activation / Deactivation	Activated, Deactivated, Switch	Activated
Sensor	Switch input selection	-	-

This function can be used for heating backup.

Heat from the store is mixed into the heating circuit return by means of a mixing valve in order to add heat to the heating circuit. The controller compares the temperature at the selected store sensor to the heating circuit return temperature. If the store temperature exceeds the heating circuit return temperature by the switch-on temperature difference, the mixer will be used to add heat from the store to the heating circuit return. The mixer will be opened or closed in pulses de-

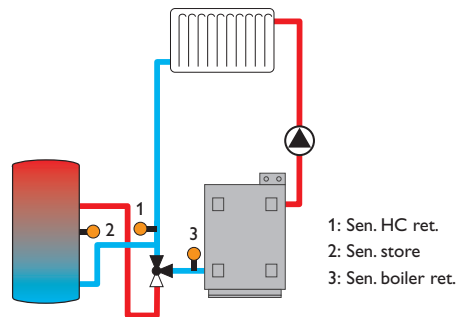
pending on this deviation. The pulses are determined by the adjustable interval. The pause is determined by the difference between the actual value and the set value.

Thus, the heating circuit return temperature increases by the ΔT_{Set} value. The adjustable maximum boiler return temperature limits the mixing temperature. If the store temperature falls below the heating circuit return temperature by the switch-off temperature difference, the mixer will close.

The runtime defines the time needed for the mixer to switch from its initial position to the end position. The **Time** defines the point in time when the mixer is set to its initial or ending position respectively.

HC intern. option

If the **HC intern.** option is activated, the return mixing function will only become active when a selectable heating circuit connected to the same controller is active, too. For this purpose, the heating circuit selected has to be controlled by the controller or by a module connected.



Flow rate monitoring

Flow rate mon. ▾

► Sensor IMP2

Ref. relay R4

Time 30 s

Arrangement / Opt. functions / Add new function / Flow rate mon.

Adjustment channel	Description	Adjustment range/selection	Factory setting
Sensor	Flow rate sensor selection	system dependent	-
Ref. relay	Reference relay selection	system dependent	-
Time	Delay time	1 ... 300 s	30 s
Funct.	Activation / Deactivation	Activated, Deactivated, Switch	Activated
Sensor	Switch input selection	-	-

This function can be used to detect malfunctions that impede the flow rate and to switch off the corresponding output. This will prevent system damage, e.g. through a dry run of the pump.

If the flow rate monitoring function is activated, an error message will appear when no flow rate is detected at the allocated flow rate sensor after the delay time has elapsed.

If a reference relay has been selected, the flow rate monitoring function will become active when the allocated relay switches on. In case of an error, the reference relay is blocked.

The error message will appear both in the **Status / Messages** menu and in the **Status / Arrangement / Flow rate mon.** menu. It can be acknowledged in the **Status / Arrangement / Flow rate mon.** menu only.

10 HQM

HQM

► Add new function back

Add new function

► HQM

Impulse counter back

In the **HQM** menu, up to 7 internal heat quantity measurements and up to 3 impulse counters can be activated and adjusted.



Note

The adjustment of the functions is similar to the adjustment of optional functions, see page 15.

Calorimeter

HQM ▾

► Sen. flow S2

Sen. ret. S4

☐ Sen. flow rate

HQM / Add new function / HQM

Adjustment channel	Description	Adjustment range/selection	Factory setting
Sen. flow	Flow sensor selection	system dependent	system dependent
Sen. ret.	Return sensor selection	system dependent	system dependent
Sen. flow rate	Flow rate sensor option	Yes, No	No
Sen. flow rate	Flow rate sensor selection	IMP1 ... IMP3, Ga1, Ga2, Gd1, Gd2, FR1	-
Fl.rate	Flow rate (only if Sen. flow rate = No)	1.0 ... 500.0 l/min	3.0 l/min
Relay	Relay selection	system dependent	-

Adjustment channel	Description	Adjustment range/selection	Factory setting
Fluid type	Heat transfer fluid	Tyfocon LS, Propylene glycol, Ethylene glycol, Water	Water
Concentr.	Glycol concentration in the heat transfer fluid (only if fluid type = propylene glycol or ethylene glycol)	20 ... 70 %	40 %
Alternative unit	Alternative unit option	Yes, No	No
Unit	Alternative display unit	Coal, Gas, Oil, CO ₂	CO ₂
Factor	Conversion factor	0.0000001 ... 100.0000000	0.5000000
Carryover	Carryover value (for the first-time configuration or after a HQM reset only)	-	-
Funct.	Activation / Deactivation	Activated, Deactivated, Switch	Activated
Sensor	Switch input selection	-	-

If the flow rate sensor option is activated, an impulse input or, if available, a Grundfos Direct Sensor™ or a flow rate sensor with frequency signal can be selected. The flow rate sensors with frequency signal and the Grundfos Direct Sensors™ will only be available if they have been previously registered in the **Inputs/Modules** menu. The impulse rate must be adjusted in that menu as well.

If the flow rate sensor option is deactivated, the controller calculates the heat quantity by means of a fixed flow rate value. This is called heat quantity balancing. For this purpose, the flow rate must be read from the flowmeter at 100 % pump speed and adjusted in the adjustment channel **Fl.rate**. In addition to that, a relay must be allocated. Heat quantity balancing is in effect whenever the allocated relay is active. In the adjustment channel **Fluid type** the heat transfer fluid must be selected. If either propylene glycol or ethylene glycol is selected, the adjustment channel **Concentration** is indicated in which the antifreeze ratio of the heat transfer fluid can be adjusted.

If a calorimeter is being configured for the first time or after the overall quantity has been reset, the parameter **Carryover** appears. A former value which is to be added to the overall quantity, can be entered.

When the **Alternative unit** is activated, the controller converts the heat quantity into the quantity of fossil fuels (coal, oil or gas) saved, or the CO₂ emission saved respectively. The alternative unit can be selected. A conversion factor must be adjusted for the calculation. The conversion factor depends on the arrangement in use and has to be determined individually.

Impulse counter

Impulse counter ▼

▶ Input IMP1

Carryover

Funct. Activated

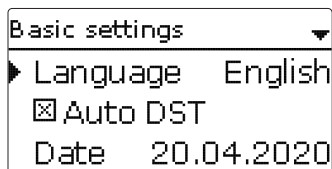
HQM /Add new function /Impulse counter

Adjustment channel	Description	Adjustment range/selection	Factory setting
Input	Impulse input	IMP1 ... IMP3	-
Carryover	Carryover value (for the first-time configuration or after a reset only)	-	-
Funct.	Activation / Deactivation	Activated, Deactivated, Switch	Activated
Sensor	Switch input selection	-	-

With an impulse counter, the impulses of a device with S0 output can be counted, e.g. for balancing the yield of a PV system.

For this purpose, one of the impulse inputs of the controller has to be selected in the **Input** channel. If an impulse counter is being configured for the first time or after the overall quantity has been reset, the parameter **Carryover** appears. A former value which is to be added to the overall quantity can be entered.

11 Basic settings

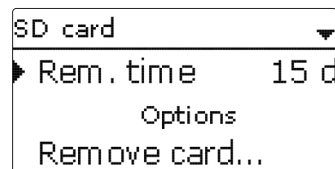


Basic settings

Adjustment channel	Description	Adjustment range / selection	Factory setting
Language	Selection of the menu language	Deutsch, English, Français, Italiano, Español, Nederlands, Suomi	Deutsch
Auto DST	Daylight savings time selection	Yes, No	Yes
Date	Adjustment of the date	01.01.2001 ... 31.12.2050	01.01.2020
Time	Adjustment of the current time	00:00 ... 23:59	-
Temp. unit	Temperature unit	°C, °F	°C
Vol. unit	Volume unit	Gallons, Litre	Litre
Press. unit	Pressure unit	psi, bar	bar
Energy unit	Energy unit	kWh, MBTU	kWh
Blocking protect.	Blocking protection submenu	-	-
Start. time	Blocking protection starting time	00:00 ... 23:59	12:00
Runtime	Blocking protection runtime	1 ... 30 s	10 s
Reset	back to factory setting	Yes, No	No
Scheme	Scheme selection	0000 ... 9999	0000

In the **Basic settings** menu, all basic parameters for the controller can be adjusted. Normally, these settings have been made during commissioning. They can be subsequently changed in this menu.

12 SD card



SD card

Adjustment channel	Description	Adjustment range / selection	Factory setting
Remove card...	Safely remove card	-	-
Save adjustments	Save adjustments	-	-
Load adjustments	Load adjustments	-	-
Logging int.	Logging interval	00:01 ... 20:00 (mm:ss)	01:00
Logging type	Logging type	Cyclic, Linear	Linear

The controller is equipped with an SD card slot for SD memory cards.

With an SD card, the following functions can be carried out:

- Logging measurement and balance values. After the transfer to a computer, the values can be opened and visualised, e.g. in a spreadsheet.
- Store adjustments and parameterisations on the SD card and, if necessary, retrieve them from there.
- Running firmware updates on the controller.



Note

The MicroSD card used must be formatted in FAT32.

Firmware updates

The current software can be downloaded from www.resol.com/firmware. When an SD card with a firmware update is inserted, the enquiry **Update?** is indicated on the display.

➔ To run the update, select **Yes** and confirm by pressing button **5**.

The update will run automatically. The indication **Please wait...** and a progress bar will appear on the display. When the update has been completed, the controller will automatically reboot and run a short initialisation phase.



Note

Only remove the card when the initialisation phase has been completed and the main menu is indicated on the controller display!

➔ To skip the update, select **No**.

The controller starts normal operation.



Note

The controller will only recognise a firmware update file if it is stored in a folder named **RESOL\HCMX** on the first level of the SD card.

➔ Create a folder named **RESOL\HCMX** on the SD card and extract the downloaded ZIP file into this folder.

Starting the logging

1. Insert the SD card into the slot.
2. Adjust the desired logging type and interval.

Logging will start immediately.

Completing the logging process

1. Select the menu item **Remove card...**
2. After **Remove card** is displayed, remove the card from the slot.

When **Linear** is adjusted in the logging type adjustment channel, data logging will stop if the capacity limit is reached. The message **Card full** will be displayed.

If **Cyclic** is adjusted, the oldest data logged onto the SD card will be overwritten as soon as the capacity limit is reached.



Note

Because of the increasing size of the data packets, the remaining logging time does not decrease linearly. The data packet size can increase, e.g. with the increasing operating hours value.

Storing controller adjustments

➔ To store the controller adjustments on the SD card, select the menu item **Save adjustments**.

While the adjustments are being stored, first **Please wait...**, then **Done!** will be indicated on the display. The controller adjustments are stored as a .SET file on the SD card.

Loading controller adjustments

1. To load controller adjustments from an SD card, select the menu item **Load adjustments**.

The **file selection** window will appear.

2. Select the desired .SET file.

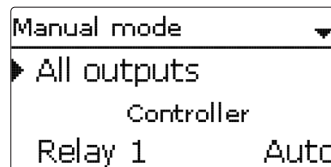
While the adjustments are being loaded, first **Please wait...**, then **Done!** will be indicated on the display.



Note

To safely remove the SD card, always select the menu item **Remove card...** before removing the card.

13 Manual mode



Manual mode

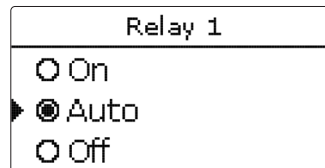
Adjustment channel	Description	Adjustment range / selection	Factory setting
All outputs...	Selection operating mode of all relays	Auto, Off	Off
Relay 1 ... X	Operating mode of relay	On, Auto, Off	Auto
Output A ... D	Operating mode of signal output	On, Max., Auto, Min., Off	Auto
Demand 1 (2)	Operating mode of demand	Max., Auto, Min., Off	Auto
Pump 1 (2)	Operating mode of pump	Max., Auto, Min., Off	Auto
Valve 1 (2)	Operating mode of valve	Max., Auto, Min., Off	Auto

In the **Manual mode** menu, the operating mode of all outputs in the controller and in modules connected can be adjusted.

In the **All outputs...** menu, all outputs can be switched off (Off) or set to automatic mode (Auto) at once:

Off = Output is switched off (manual mode)

Auto = Output is in automatic mode



The operating mode can be selected for each individual output, too. The following options are available:

Off = Output is switched off (manual mode)
 On = Output is active at 100% speed (manual mode)
 Auto = Output is in automatic mode
 Min. = Output is active at minimum speed (manual mode)
 Max. = Output is active at maximum speed (manual mode)



Note

After service and maintenance work, the relay mode must be set back to **Auto**. In manual mode the control logic is overridden.

14 User code

User code:

0000

In the **User code** menu, a user code can be entered. Each number of the 4-digit code must be individually adjusted and confirmed. After the last digit has been confirmed, the menu automatically jumps to the superior menu level.

To access the menu areas of the installer level, the installer user code must be entered:

Installer: 0262

For safety reasons, the user code should generally be set to the customer code before the controller is handed to the customer!

Customer: 0000

15 Inputs/Modules

Inputs / Modules

Modules
 Inputs
 back

In the **Inputs/Modules** menu, external modules can be registered and sensor offsets be adjusted.

15.1 Modules

Modules

☒ Module 1
☐ Module 2
☐ Module 3

In this menu, up to 5 external modules can be registered.

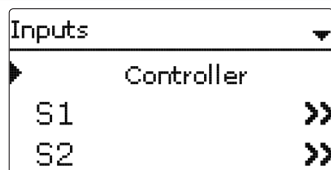
All modules connected and acknowledged by the controller are available.

➔ To register a module, select the corresponding menu item by pressing button

The checkbox indicates the selection. If a module is registered, all its sensor inputs and relay outputs will be available in the corresponding controller menus.

Inputs/Modules/Modules

Adjustment channel	Description	Adjustment range/selection	Factory setting
Module 1 ... 5	Registering external modules	-	-



In this submenu, the type of the sensor connected can be adjusted for each individual input. The following types can be selected:

- S1 ... S12: Switch, Fern (remote control), BAS (operating mode switch), Pt1000, Pt500, KTY, None
- S13/IMP1 ... S15/IMP3: Impulse, Switch, Fern (remote control), BAS (operating mode switch), Pt1000, Pt500, KTY, None
- CS10: A ... K
- Ga1, Ga2: RH, RPS, VFS, None
- Gd1, Gd2: RHD, RPD, VFD, None
- FR1: VTY20MA, DN20, DN25, DN32, None

ATTENTION! System damage!

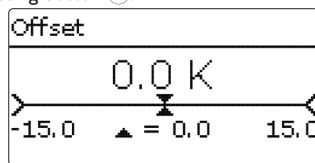


Selecting the wrong sensor type will lead to unwanted control behaviour. In the worst case, system damage can occur!

→ **Make sure that the right sensor type is selected!**

If **KTY**, **Pt500** or **Pt1000** is selected, the channel **Offset** will appear, in which an individual offset can be adjusted for each sensor.

1. In order to select a sensor for the offset adjustment, select the corresponding menu item by pressing button (5).



2. To adjust the sensor offset, select the desired value by pressing buttons (2) or (4), then confirm by pressing button (5).



Note

If a sensor is used as the temperature sensor of a function, the sensor types **Switch**, **Fern**, **BAS**, **Impulse** and **none** will not be available for the corresponding input.

ATTENTION! Damage to the device!



Sensor inputs which have been set to the sensor type switch can only be used for connecting potential-free switches.

→ **Make sure no voltage is applied!**

If **switch** is selected, the **inverted** option will appear and can be used for inverting the behaviour of the switch.

CS sensor offset

If a CS10 irradiation sensor is to be connected, an offset has to be carried out before the connection is made.

To carry out the offset, proceed as follows:

1. Adjust the CS type in the **Type** channel.
2. Select the **Offset** channel.
3. Confirm the **Reset?** enquiry with **Yes**.
4. Select **back** to return to the **Inputs** menu, then connect the CS sensor.



Note

When Grundfos Direct Sensors™ are used, connect the sensor ground common terminal block to PE (see page 8).

Inputs/Modules/Inputs

Adjustment channel	Description	Adjustment range/selection	Factory setting
S1 ... S12	Sensor input selection	-	-
Type	Sensor type selection	Switch, Fern, BAS, KTY, Pt500, Pt1000, None	Pt1000
Offset	Sensor offset	-15.0 ... +15.0 K	0.0 K
IMP1 ... IMP3	Impulse input selection	-	-
Type	Sensor type selection	Impulse, Switch, Fern, BAS, KTY, Pt500, Pt1000, None	Impulse
Inverted	Switch inversion (only when Type = Switch)	Yes, No	No
Vol./Imp.	Impulse rate (only when Type = Impulse)	0.1 ... 100.0 l	1.0 l

Adjustment channel	Description	Adjustment range/selection	Factory setting
CS10	CS10 input	-	-
Type	CS type	A ... K	E
Offset	Delete offset	Yes, No	No
Ga1, 2	Analogue Grundfos Direct Sensor™ 1, 2	-	-
Type	Grundfos-Direct-Sensor™ type	RPS, VFS, RH, None	None
Max.	Maximum pressure (if Type = RPS)	0.0 ... 16.0 bar	6 bar
Min.	Minimum flow rate (if Type = VFS)	1 ... 399 l/min	2 l/min
Max.	Maximum flow rate (if Type = VFS)	2 ... 400 l/min	40 l/min
Offset	Sensor offset	-15.0 ... +15.0 K	0.0 K
Gd1, 2	Digital Grundfos Direct Sensor™ 1, 2	-	-
Type	Grundfos-Direct-Sensor™ type	RPD, VFD, RHD, None	None
Offset	Sensor offset	-15.0 ... +15.0 K	0.0 K
	if Type = VFD: Measuring range selection	2 - 40 l/min, 2 - 40 l/min (fast), 1 - 12 l/min*	1 - 12 l/min
FR1	Frequency input	-	-
Type	Sensor type selection	DN20, DN25, DN32, VTY20MA, None	None

* For the Inputs Gd1 and Gd2, the following sensor combinations are possible:

- 1 x RPD, 1 x VFD
- 2 x VFD, but with different measuring ranges only
- 1 x VFD, 1 x RHD
- 1 x RPD, 1 x RHD

16 Troubleshooting

If a malfunction occurs, a message will appear on the display of the controller.

WARNING!

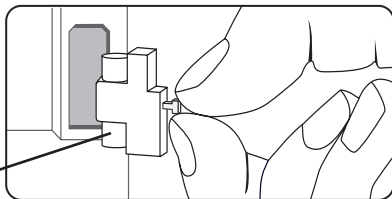
Danger of electric shock!

Upon opening the housing, live parts are exposed!

→ **Always disconnect the device from power supply before opening the housing!**



The controller is protected by a fuse. The fuse holder (which also holds the spare fuse) becomes accessible when the cover is removed. To replace the fuse, pull the fuse holder from the base.



Fuse

Directional pad flashes red.

Sensor fault. The message **!Sensor fault** instead of a temperature is shown on the sensor display channel.

Short circuit or line break.

Disconnected temperature sensors can be checked with an ohmmeter. Please check if the resistance values correspond with the table.

°C	°F	Ω Pt500	Ω Pt1000	Ω KTY	°C	°F	Ω Pt500	Ω Pt1000	Ω KTY
-10	14	481	961	1499	55	131	607	1213	2502
-5	23	490	980	1565	60	140	616	1232	2592
0	32	500	1000	1633	65	149	626	1252	2684
5	41	510	1019	1702	70	158	636	1271	2778
10	50	520	1039	1774	75	167	645	1290	2874
15	59	529	1058	1847	80	176	655	1309	2971
20	68	539	1078	1922	85	185	664	1328	3071
25	77	549	1097	2000	90	194	674	1347	3172
30	86	559	1117	2079	95	203	683	1366	3275
35	95	568	1136	2159	100	212	693	1385	3380
40	104	578	1155	2242	105	221	702	1404	3484
45	113	588	1175	2327	110	230	712	1423	3590
50	122	597	1194	2413	115	239	721	1442	3695

The display is permanently off.

Press button **5**. Display illuminated?

no

yes

Controller has been in standby, everything OK

Check the power supply of the controller: Is it disconnected?

no

yes

The fuse of the controller could be blown. The fuse holder (which holds the spare fuse) becomes accessible when the cover is removed. The fuse can then be replaced.

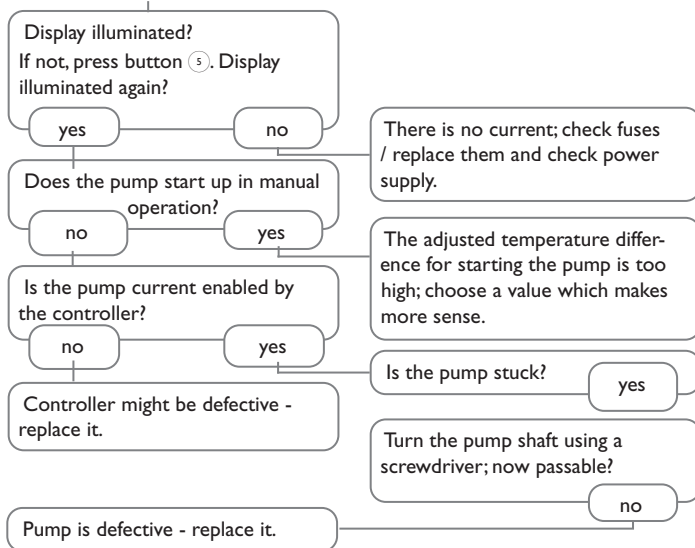
Check the supply line and reconnect it.



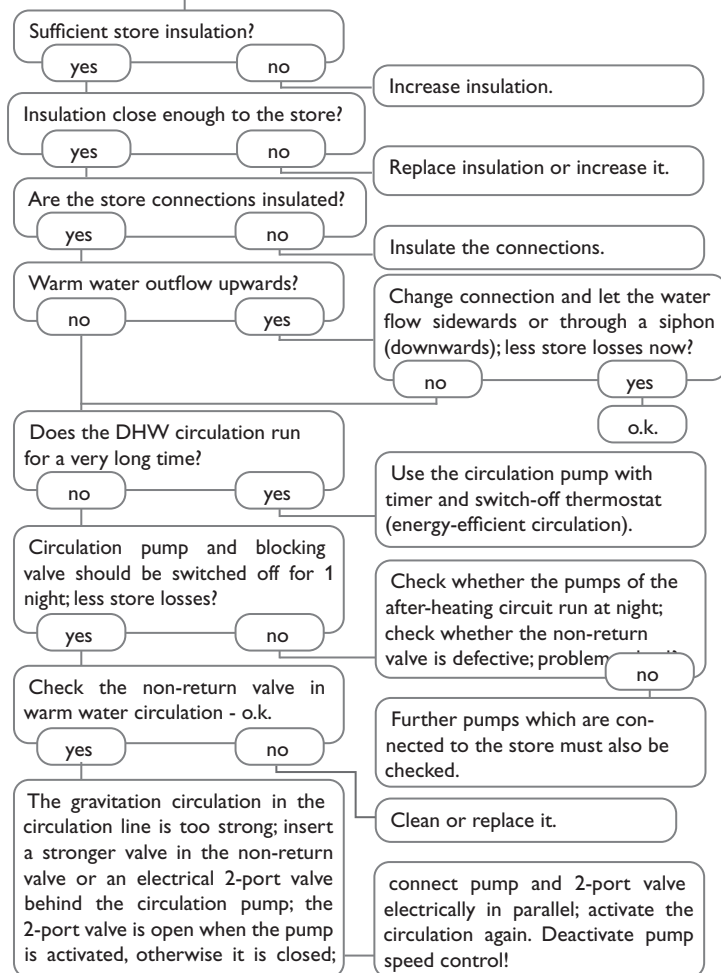
Note

For answers to frequently asked questions (FAQ) see www.resol.com.

The heating circuit pump does not work, although this is indicated on the status display.



Stores cool down at night.



17 Index

Symbols

ΔT function..... 56

Numbers

0-10 V boiler control..... 36

A

Antifreeze function..... 42

App 40

B

Backup heating, heating circuit..... 41

Boiler control..... 35

C

Calorimeter..... 59

Chimney sweeper function..... 42

Circulation..... 55

Commissioning menu..... 20

Controller adjustments, loading of..... 62

Cooling system..... 41

Correction modes..... 42

Countdown..... 42

D

Data logging..... 62

Day correction..... 38

Day/Night operation..... 39

Day operation..... 41

Dew point..... 43

DHW priority, heating circuit..... 42

E

Electrical connection..... 8

Energy saving operation, heating circuit..... 43

Error messages..... 34

Error messages, acknowledgement of..... 34

Error relay..... 53

F

Function block..... 55

Fuse, replacing of..... 66

H

Heating circuit mixer..... 37

Heating circuit pump..... 37

Heating curve..... 38

HE pump..... 9

I

Interval..... 37

Irradiation switch..... 57

M

Manual mode..... 62

Maximum flow temperature..... 38

Minimum flow temperature..... 38

Mixer, optional arrangement function..... 52

Mixer runtime..... 37

Modulating heating control..... 36

Modules, registration of..... 63

Mounting..... 6

N

Night correction..... 38

Night operation..... 39

O

Offset..... 64

Operating mode, outputs..... 63

Operating mode switch..... 40

Output selection..... 17, 19

R

Registering external modules.....	63
Remote access, heating circuit.....	40
Remote control.....	38, 40
Return mixing function.....	58
Return preheating.....	55
Room control, heating circuit.....	39
Room control unit.....	40

S

Screed drying.....	50
Sensor offset.....	64
Set flow temperature.....	38
Shared relays.....	35
Solid fuel boiler.....	54
Starting time.....	41
Start temperature.....	50
Storing controller adjustments.....	62

T

Technical data.....	5
Thermal disinfection.....	46
Thermostat function.....	56
Timer.....	13

U

User code.....	63
----------------	----

V

VBus®.....	10
Virtual.....	35

Z

Zone loading.....	52
-------------------	----



Optionales Zubehör | Optional accessories | Accessoires optionnels | Accesorios opcionales | Accessori opzionali:
www.resol.de/4you

Distributed by:

RESOL – Elektronische Regelungen GmbH

Heiskampstraße 10
45527 Hattingen / Germany

Tel.: +49 (0) 23 24 / 96 48 - 0

Fax: +49 (0) 23 24 / 96 48 - 755

www.resol.com

info@resol.com

Important note

The texts and drawings in this manual are correct to the best of our knowledge. As faults can never be excluded, please note:

Your own calculations and plans, under consideration of the current standards and directions should only be basis for your projects. We do not offer a guarantee for the completeness of the drawings and texts of this manual - they only represent some examples. They can only be used at your own risk. No liability is assumed for incorrect, incomplete or false information and / or the resulting damages.

Note

The design and the specifications can be changed without notice.
The illustrations may differ from the original product.

Imprint

This mounting- and operation manual including all parts is copyrighted. Another use outside the copyright requires the approval of **RESOL – Elektronische Regelungen GmbH**. This especially applies for copies, translations, micro films and the storage into electronic systems.

© **RESOL – Elektronische Regelungen GmbH**