



LIN-Check

Testing device for LIN bus pumps

The LIN-Check testing device is used for controlling a LIN bus pump and reading out data. Thus, the LIN bus connection can be tested.

- Intuitive operating concept
- Ergonomic design
- Easy error readout
- Including a connection cable
- Including a practical storage bag

TECHNICAL DATA

Power supply: 3 AAA batteries, included with the device, typical battery life: 2 years

Data interface: LIN bus

Functions: control of a LIN bus pump, readout of data

Housing: plastic, ABS and TPE

Indication / Display: full graphic display

Operation: 6 buttons

Ingress protection: IP 54 / DIN EN 60529

Overvoltage category: CAT I 18 V / EN 61010-1

Protection class: III

Ambient temperature: 0 ... 40 °C

Degree of pollution: 2

Maximum altitude: 2000 m above MSL

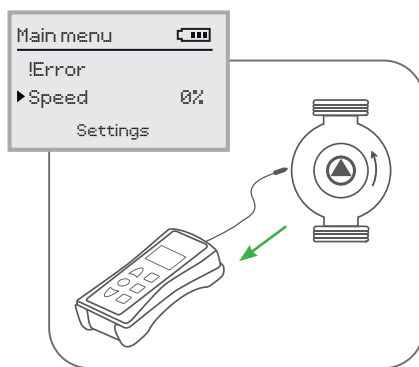
Relative humidity: 10 ... 90 %

Dimensions: 120 x 65 x 27 mm

Article no.	Article	Price bracket
280 016 70	LIN-Check – Testing device for LIN bus pumps	B

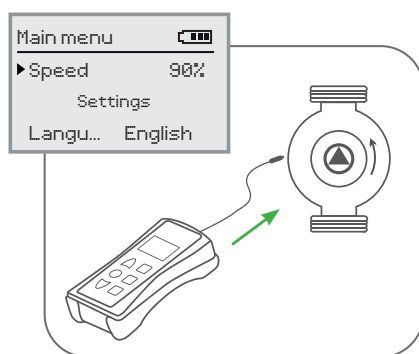


Controlling LIN bus pumps, reading out data



Reading out pump data

- For all LIN bus pumps
- Reading out error codes



Controlling a pump

- Checking pump function
- Carrying out adjustments:
 - Speed from 0 ... 100 %