



V40 Flowmeter

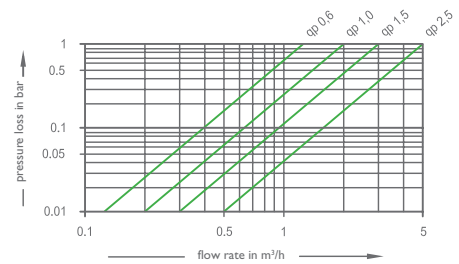
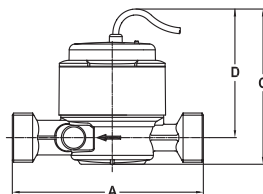


The RESOL V40 is a measuring instrument with a contactor for measuring the flow of water or water-glycol mixtures and can be connected directly to the controller or calorimeter for heat quantity measurement. After a specific volume has passed, the V40 reed switch sends an impulse to the calorimeter.

The heat quantity used is calculated by these impulses, the temperature difference and pre-defined parameters (glycol type, concentration, heat capacity etc.). Fitting included.

VERSION 1

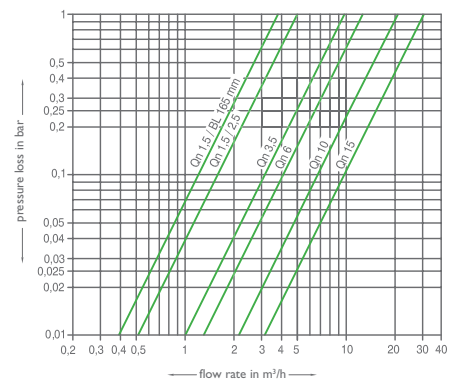
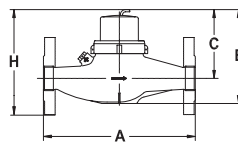
Irradiation impeller DN20	0.6; 1.5 m ³ /h	2.5 m ³ /h
A mounting length without fitting	110 mm	130 mm
mounting with fitting	208 mm	228 mm
C height with pulser	108 mm	
D height at centre of pipe	90 mm	
counter width	72 mm	
weight without fitting	0.7 kg	



Vertical and horizontal mounting is possible

VERSION 2

Irradiation impeller DN25/DN40/DN50	3.5 m ³ /h	6.0 m ³ /h	10 m ³ /h	15 m ³ /h
A mounting length without fitting	260 mm	300 mm		
B total height	143 mm	169 mm	183 mm	
C height at centre of pipe	100 mm	123 mm	126 mm	
H height with flange	152 mm	192 mm	204 mm	
weight with fitting	3.2 kg	6.4 kg	7.4 kg	
weight without fitting	2.7 kg	5.3 kg	5.8 kg	



Horizontal mounting is possible

Type		V40-15	V40-25	V40-35	V40-60	V40-100	V40-150
Version		1	1	2	2	2	2
Impulse rate	l/Imp	1	25	25	25	25	25
Nominal width	DN	20	20	25	25	40	50
Connection thread at the counter	G...B "	1	1	1 ¼	1 ¼	2	2 ¾
Connection thread of the fitting	R... "	¾	¾	1	1	1 ½	2
Max. operat. pressure	P _{max} bar	16	16	16	16	16	16
Max. operat. temperature	T _{max} °C	120	120	130	130	130	130
Nominal flow	Q _n m ³ /h	1.5	2.5	3.5	6	10	15
Maximum flow	Q _{max} m ³ /h	3	5	7	12	20	30
Insulation limit ± 3%	Q _t l/h	120	200	280	480	800	1200
Minimum flow horizontal	Q _{min} l/h	30	50	70	120	200	300
Minimum flow vertical	Q _{min} l/h	60	100	-	-	-	-

Article no.	Article	Price bracket
280 016 80	V40-15 flowmeter	B
280 011 20	V40-25 flowmeter	B
280 013 60	V40-35 flowmeter	B
280 013 70	V40-60 flowmeter	B
280 013 90	V40-150 flowmeter	B